

HARVARD UNIVERSITY
FACT BOOK
2006-2007





For user convenience, many Fact Book pages contain embedded Excel data tables. Double-click on the paperclip icons (such as the one shown here) to open these tables.

ORGANIZATION	Pages
Central Administration	2
Faculties and Allied Institutions	3
Research and Academic Centers	4 – 5
PEOPLE	Pages
Degree Student Enrollment	6 – 9
Degrees Conferred	10 – 14
International Students	15 – 16
Summer School and Non-Degree Students	17
Faculty	18 – 19
Staff	20 – 21
RESOURCES	Pages
Tuition, Fees, and Financial Aid	22 – 25
Sponsored Programs	26 – 30
Library	31 – 32
Physical Plant	33 – 34
Environmental Performance	35 – 36
FY2006 Income and Expenses	37 – 38
Endowment	39 – 40

The Harvard University Fact Book is published by:
Office of Budgets, Financial Planning and Institutional Research
Holyoke Center 780, Cambridge, MA 02138

The address for the electronic version is:
<http://vpf-web.harvard.edu/budget/factbook/index.html>

If you would like more information about data contained in the Fact Book, contact:
JASON DEWITT, Senior Data Resource Specialist

(617) 495-0591, E-mail: jason_dewitt@harvard.edu

REBECCA MATHEWS, Data Resource Specialist

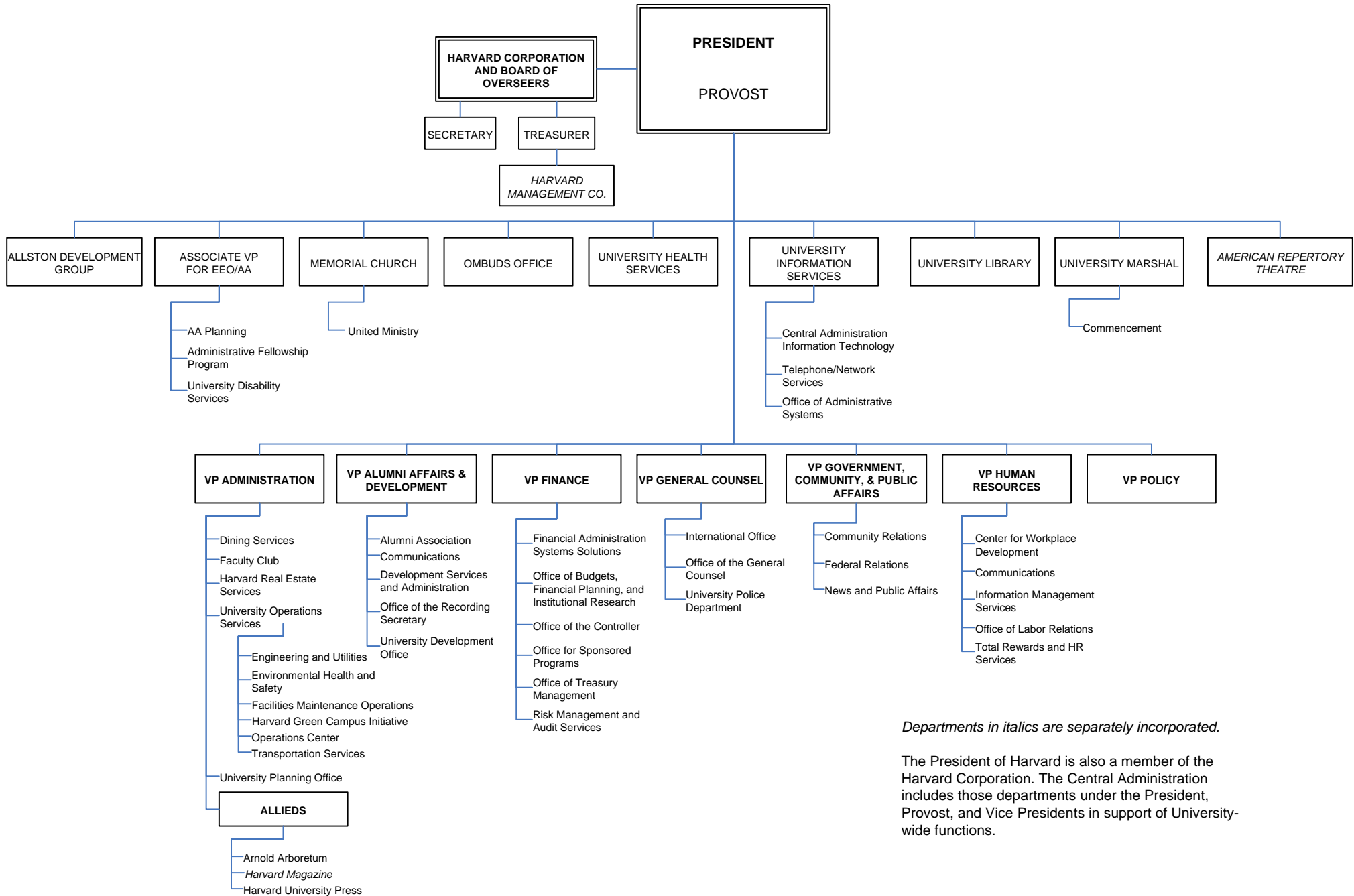
(617) 496-3568, E-mail: rebecca_mathews@harvard.edu

NINA ZIPSER, Director of Institutional Research

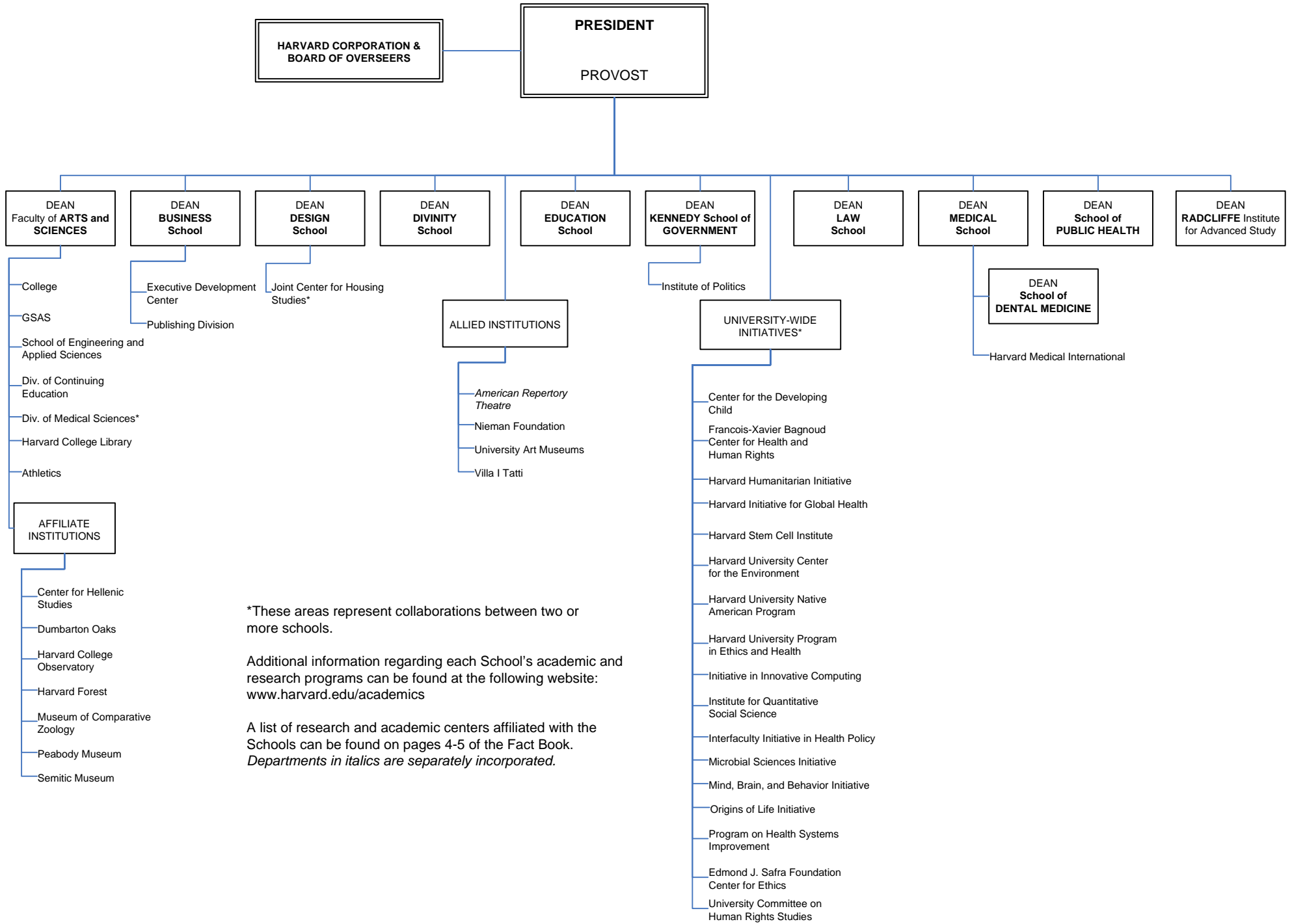
(617) 384-9236, E-mail: nina_zipser@harvard.edu

Changes to content after publication are reflected on the web version of the Fact Book.

Copyright 2007 by the President and Fellows of Harvard College



Faculties and Allied Institutions



*These areas represent collaborations between two or more schools.

Additional information regarding each School's academic and research programs can be found at the following website: www.harvard.edu/academics

A list of research and academic centers affiliated with the Schools can be found on pages 4-5 of the Fact Book. *Departments in italics are separately incorporated.*

Harvard University Research and Academic Centers ⁽¹⁾

FACULTY of ARTS and SCIENCES

Africa Initiative**
 Aga Khan Program for Islamic Architecture ⁽²⁾
 Derek Bok Center for Teaching and Learning
 Center for American Political Studies
 Center for Brain Science*
 Center for Hellenic Studies
 Center for Jewish Studies
 Center for Middle Eastern Studies
 Center for Nanoscale Systems
 Center for Systems Biology
 Davis Center for Russian and Eurasian Studies
 W.E.B. Dubois Institute for African and
 African-American Research
 Dumbarton Oaks
 Fairbank Center for East Asian Research
 Minda de Gunzburg Center for European
 Studies
 Harvard Asia Center**
 South Asia Initiative ⁽³⁾
 Harvard Smithsonian Center for Astrophysics
 Harvard University Center for the
 Environment**
 Harvard-Yenching Institute
 Humanities Center
 Institute for Quantitative Social Science**
 Center for Geographic Analysis⁽⁴⁾
 Harvard-MIT Data Center⁽⁴⁾
 Islamic Studies Program
 Kavli Institute
 Korea Institute
 Materials Research Science and Engineering
 Center
 Nanoscale Science and Engineering
 Program for Evolutionary Dynamics
 Reischauer Institute of Japanese Studies
 David Rockefeller Center for Latin American
 Studies**
 Rowland Institute
 Technology and Entrepreneurship at Harvard
 Ukrainian Research Institute
 Charles Warren Center for Studies in
 American History
 Weatherhead Center for International Affairs
 Harvard Academy for International and
 Area Studies⁽⁵⁾

Olin Institute for Strategic Studies⁽⁵⁾
 Program on U.S. - Japan Relations⁽⁵⁾

BUSINESS

California Research Center
 C. Roland Christensen Center for Teaching
 and Learning
 Global Initiative
 Asia-Pacific Research Center
 Europe Research Center
 India Research Center
 Japan Research Office
 Latin America Research Center
 Health Care Initiative
 Institute for Strategy and Competitiveness*
 Leadership Initiative
 Arthur M. Rock Center for Entrepreneurship
 Social Enterprise Initiative

DESIGN

Center for Technology and Environment
 Joint Center for Housing Studies*
 Real Estate Academic Initiative*

DIVINITY

Center for the Study of World Religions
 Summer Leadership Institute
 Women's Studies in Religion Program

EDUCATION

The Change Leadership Group
 The Civil Rights Project at Harvard
 The Collaborative Group on Academic
 Careers in Higher Education
 Executive Leadership Program for Educators
 at Harvard University*
 Harvard Family Research Project
 National Center for the Study of Adult
 Learning and Literacy
 The Principals' Center
 Project for Policy Innovation in Education
 Project Zero
 Public Education Leadership Project
 The Achievement Gap Initiative*
 WIDE World⁽⁶⁾

(1) The Research and Academic Centers listed are those affiliated with the Schools.

(2) The Aga Khan Program for Islamic Architecture is a joint program with M.I.T.

(3) This program is housed and administered within the Asia Center.

(4) These Programs are housed and administered within the Institute for Quantitative Social Science

(5) These Programs are housed and administered within the Weatherhead Center.

(6) WIDE is the Wide-scale Interactive Development for Educators.

* These Programs represent collaborations between two or more Schools.

** These Programs are housed in particular Schools, but are considered University-Wide Initiatives.

SOURCE: SCHOOLS

Harvard University Research and Academic Centers ⁽¹⁾

GOVERNMENT

The Roy and Lila Ash Institute for Democratic Governance and Innovation
 Robert and Renee Belfer Center for Science and International Affairs
 Carr Center for Human Rights Policy
 Center for International Development at Harvard University**
 Center for Public Leadership
 Harvard Environmental Economics Program**
 Hauser Center for Nonprofit Organizations**
 Institute of Politics
 Joint Center for Housing Studies*
 Mossavar-Rahmani Center for Business and Government
 Joan Shorenstein Center on the Press, Politics and Public Policy
 A. Alfred Taubman Center for State and Local Government⁽³⁾
 Malcolm Wiener Center for Social Policy
 Women and Public Policy Program

UNIVERSITY-WIDE INITIATIVES*

Center on the Developing Child
 Francois-Xavier Bagnoud Center for Health and Human Rights
 Harvard Humanitarian Initiative
 Harvard Initiative for Global Health
 Harvard Stem Cell Institute**
 Harvard University Center for the Environment**
 Harvard University Native American Program
 Harvard University Program in Ethics and Health Initiative in Innovative Computing
 Institute for Quantitative Social Science
 Interfaculty Initiative in Health Policy
 Microbial Sciences Initiative
 Mind, Brain, and Behavior Initiative
 Origins of Life Initiative
 Program on Health Systems Improvement
 Edmond J. Safra Foundation Center for Ethics
 University Committee on Human Rights Studies

MEDICINE

Center for Biomedical Informatics*
 Center for Craniofacial Engineering
 Center for Excellence in Women's Health*
 Center for Genetics and Genomics, Harvard Medical School-Partners Healthcare*
 Center for Health and the Global Environment*
 Center for Hereditary Deafness*
 Center for Immunodeficiency
 Center for Integration of Medicine and Innovative Technology
 Center for Magnetic Resonance*
 Center for Mental Health and Media*
 Center for Neurodegeneration and Repair

Center for Neurofibromatosis and Allied Disorders*
 Center for Palliative Care
 Dana Farber/Harvard Cancer Center*
 Division for Research and Education in Complementary and Integrative Medical Therapies
 Division of AIDS*
 Division of Emergency Medicine
 Division of Health Care Policy Research and Education*
 Division of Health Sciences and Technology
 Division of Medical Ethics*
 Division of Nutrition*
 Division on Primary Care*
 Harvard Clinical Research Institute
 Harvard-Mahoney Neuroscience Institute*
 Institute of Chemistry and Cell Biology and Initiative for Chemical Genetics*
 Institute of Proteomics
 JDRF Center for Immunological Tolerance at Harvard⁽²⁾
 New England Primate Research Center
 New England Regional Center of Excellence for Biodefense and Emerging Infectious Diseases*

LAW

Berkman Center for Internet & Society
 Child Advocacy Program
 East Asian Legal Studies Program
 Environmental Law and Policy Program
 European Law Research Center
 Fund for Tax and Fiscal Policy Research
 Charles Hamilton Houston Institute for Race and Justice
 Human Rights Program
 Islamic Legal Studies Program
 Labor and Worklife Program
 Legal History Program
 John M. Olin Center for Law, Economics and Business
 Petrie-Flom Center for Health Law Policy, Biotechnology, and Ethics*
 Program on Corporate Governance
 Program on International Financial Systems
 Program on Negotiation
 Program on the Legal Profession

PUBLIC HEALTH

Center for Health Communication
 Francois-Xavier Bagnoud Center for Health and Human Rights**
 Harvard Center for Population and Development Studies
 Harvard Center for Society and Health
 Harvard Injury Control Center
 Harvard School of Public Health AIDS Initiative

RADCLIFFE INSTITUTE FOR ADVANCED STUDY

Radcliffe Institute Fellowship Program
 Arthur and Elizabeth Schlesinger Library on the History of Women in America

(1) The Research and Academic Centers listed are those affiliated with the Schools.

(2) JDRF is the Juvenile Diabetes Research Foundation.

(3) The Taubman Center includes the Rappaport Institute for Greater Boston.

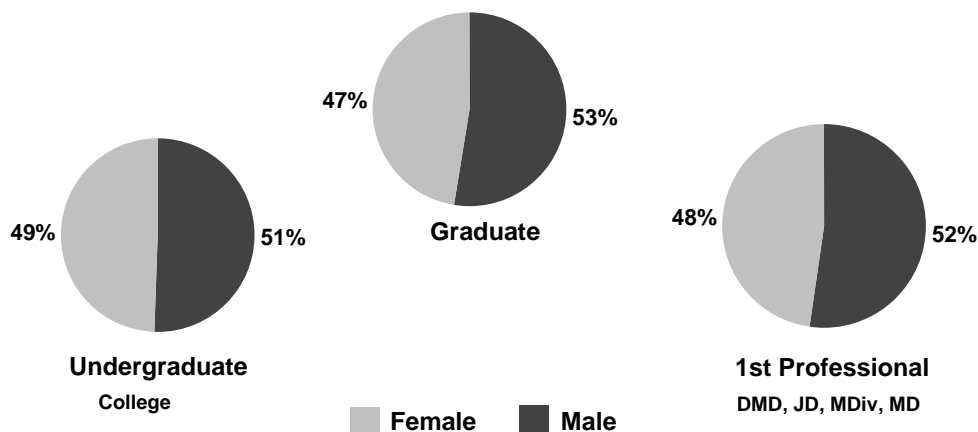
* These Programs represent collaborations between two or more Schools.

** These Programs are housed in particular Schools, but are considered University-Wide initiatives.

Degree Student Head Count: Fall 2006
 Counts taken as of October 15, 2006



	Male	Female	Total	Full-Time	Part-Time	Total
College ⁽¹⁾						
Freshmen	813	882	1,695	1,695	-	1,695
Sophomores	861	843	1,704	1,704	-	1,704
Juniors ⁽²⁾	843	806	1,649	1,649	-	1,649
Seniors	881	786	1,667	1,664	3	1,667
Subtotal	3,398	3,317	6,715	6,712	3	6,715
GSAS ⁽³⁾						
Division of Med. Sci.	261	307	568	568	-	568
All Other	1,839	1,343	3,182	3,169	13	3,182
Subtotal	2,100	1,650	3,750	3,737	13	3,750
Business	1,177	678	1,855	1,855	-	1,855
Dental ⁽⁴⁾	96	111	207	207	-	207
Design	310	308	618	574	44	618
Divinity	207	232	439	411	28	439
Education	248	723	971	850	121	971
Government	614	415	1,029	978	51	1,029
Law	1,075	891	1,966	1,966	-	1,966
Medical	413	405	818	818	-	818
Public Health	291	480	771	543	228	771
Extension						
Undergraduate	185	200	385	168	217	385
Graduate	303	287	590	95	495	590
Subtotal, All Degree Students	10,417	9,697	20,114	18,914	1,200	20,114
Adj. for Joint Degree Students	(43)	(29)	(72)	(72)	-	(72)
TOTAL	10,374	9,668	20,042	18,842	1,200	20,042



(1) Students in the Advanced Standing Program are counted as Juniors in their second year and Seniors in their third and fourth year. College total excludes students who are studying abroad.
 (2) Counts for Juniors include 19 undergraduates unclassified by year.
 (3) Candidates for the Ph.D. are enrolled in GSAS but may cross register for courses in other faculties.
 (4) Clinical specialty students in the Dental School are not included in totals. See page 17 for Dental Clinical Specialty counts.
 SOURCE: REGISTRAR OFFICES

Historical Enrollments: Fall 2001 - 2006 ⁽¹⁾

Degree Student Head Count by School

Counts taken as of October 15, 2006

	2001	2002	2003	2004	2005	2006
College ⁽²⁾	6,650	6,649	6,597	6,562	6,613	6,715
GSAS ⁽³⁾	3,358	3,357	3,510	3,638	3,753	3,750
Business	1,847	1,836	1,832	1,823	1,851	1,855
Dental ⁽⁴⁾	213	207	202	205	199	207
Design	536	556	595	619	579	618
Divinity	451	443	455	428	423	439
Education	1,121	1,057	1,080	1,069	975	971
Government	881	896	924	956	944	1,029
Law	1,914	1,915	1,899	1,921	1,948	1,966
Medical	777	787	780	766	784	818
Public Health	808	825	737	825	787	771
Extension						
Undergraduate	435	401	403	385	389	385
Graduate	626	671	676	592	599	590
Subtotal, All Degree Students	19,617	19,600	19,690	19,789	19,844	20,114
Adj. for Joint Degree Students	(78)	(64)	(52)	(58)	(65)	(72)
TOTAL	19,539	19,536	19,638	19,731	19,779	20,042
Enrollment Level ⁽⁵⁾						
Undergraduates						
Full-Time	6,831	6,822	6,767	6,722	6,792	6,880
Part-Time	254	228	233	225	210	220
Subtotal	7,085	7,050	7,000	6,947	7,002	7,100
Graduate Students						
Full-Time	8,865	8,818	8,993	9,082	9,071	9,238
Part-Time	952	992	1,004	1,059	1,026	963
Subtotal	9,817	9,810	9,997	10,141	10,097	10,201
1st Professional Degree ⁽⁶⁾						
Full-Time	2,690	2,722	2,668	2,680	2,728	2,796
Part-Time	25	18	25	21	17	17
Subtotal	2,715	2,740	2,693	2,701	2,745	2,813
TOTAL	19,617	19,600	19,690	19,789	19,844	20,114

(1) Several Harvard schools enrolled students displaced by Hurricane Katrina during Fall 2005. These students are included in the counts for non-degree students on page 17.

(2) College totals exclude students who were studying abroad at the time data was compiled.

(3) Candidates for the Ph.D. are enrolled in GSAS but may cross register for courses in other faculties.

(4) These figures exclude postdoctoral students enrolled in a clinical specialty. See page 17 for Dental Clinical Specialty counts.

(5) Includes degree candidates from the Extension School. Not adjusted for joint degree students.

(6) 1st Professional degrees include DMD, JD, MDiv, and MD.

SOURCE: REGISTRAR OFFICES

Student Enrollment by Degree: Fall 2006
 Counts taken as of October 15, 2006



		Male		Female		Total
		Full-Time	Part-Time	Full-Time	Part-Time	
College ⁽¹⁾	A.B., S.B.	3,397	1	3,315	2	6,715
GSAS	A.M., S.M.	99	11	62	2	174
	Ph.D.	1,990	-	1,586	-	3,576
Business	M.B.A.	1,155	-	665	-	1,820
	D.B.A.	22	-	13	-	35
Dental	D.M.D.	59	-	84	-	143
	M.M.Sc.	24	-	17	-	41
	D.M.Sc.	13	-	10	-	23
Design	M.Arch.	167	20	143	18	348
	M.A.U.D., M.L.A.U.D.	25	-	20	-	45
	M.Des.	30	-	11	1	42
	M.L.A.	25	2	63	-	90
	M.U.P.	17	3	35	-	55
	D.Des.	21	-	17	-	38
Divinity	M.Div.	75	4	80	13	172
	M.T.S.	95	4	114	7	220
	Th.M.	2	-	-	-	2
	Th.D.	27	-	18	-	45
Education	Ed.M.	127	18	405	68	618
	Ed.D.	90	9	216	26	341
	C.A.S.	4	-	8	-	12
Government	M.P.A. ⁽²⁾	228	17	129	7	381
	M.P.A.I.D.	91	2	57	3	153
	M.P.P.	245	13	195	7	460
	M.U.P.	6	-	7	1	14
	Ph.D.	12	-	8	1	21
Law	J.D.	942	-	787	-	1,729
	LL.M.	94	-	71	-	165
	S.J.D.	39	-	33	-	72
Medical	M.D.	386	-	383	-	769
	M.M.Sc.	27	-	22	-	49
Public Health	M.P.H., M.O.H.	66	63	71	66	266
	M.S.	38	43	131	20	232
	D.P.H.	3	2	7	5	17
	D.S.	65	11	162	18	256
Extension	A.A., A.L.B.	88	97	80	120	385
	A.L.M., Grad. Cert.	51	252	44	243	590
TOTAL ⁽³⁾		9,845	572	9,069	628	20,114

(1) College total excludes students who are studying abroad.

(2) M.P.A. Program includes the two-year M.P.A. program and the one-year M.P.A. Mid-Career program.

(3) Not adjusted for joint degree students.

SOURCE: REGISTRAR OFFICES

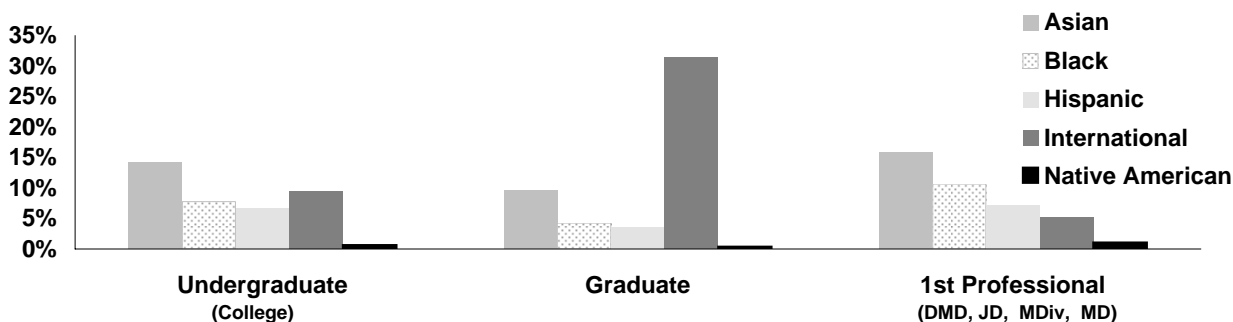
Degree Student Enrollment by Ethnicity: Fall 2006

Counts taken as of October 15, 2006



	College	GSAS	Business	Dental	Design	Divinity	Education	Government	Law	Medical	Public Health	Extension	Total
Asian/Pacific Islander													
Male	415	139	106	16	37	12	22	40	97	105	27	54	1,070
Female	532	157	113	36	62	16	74	38	106	100	48	43	1,325
Subtotal	947	296	219	52	99	28	96	78	203	205	75	97	2,395
Percent	14%	8%	12%	25%	16%	6%	10%	8%	10%	25%	10%	10%	11.9%
Black/Non-Hispanic													
Male	218	35	50	3	5	9	29	27	83	43	8	25	535
Female	303	78	48	2	3	12	58	27	109	48	33	20	741
Subtotal	521	113	98	5	8	21	87	54	192	91	41	45	1,276
Percent	8%	3%	5%	2%	1%	5%	9%	5%	10%	11%	5%	5%	6.3%
Hispanic													
Male	205	68	26	5	12	8	10	23	65	34	8	27	491
Female	238	56	17	6	11	9	33	30	56	33	19	22	530
Subtotal	443	124	43	11	23	17	43	53	121	67	27	49	1,021
Percent	7%	3%	2%	5%	4%	4%	4%	5%	6%	8%	4%	5%	5.1%
International Students													
Male	385	720	427	24	121	25	31	285	156	27	103	66	2,370
Female	249	454	208	26	84	11	84	161	135	26	109	75	1,622
Subtotal	634	1,174	635	50	205	36	115	446	291	53	212	141	3,992
Percent	9%	31%	34%	24%	33%	8%	12%	43%	15%	6%	27%	14%	19.8%
Native American													
Male	18	1	2	-	1	4	2	5	10	6	-	1	50
Female	23	4	1	-	2	1	4	6	5	6	4	1	57
Subtotal	41	5	3	-	3	5	6	11	15	12	4	2	107
Percent	1%	0%	0%	0%	0%	1%	1%	1%	1%	1%	1%	0%	0.5%
White/Non-Hispanic													
Male	1,685	889	426	44	115	137	107	187	523	183	106	283	4,685
Female	1,457	704	224	37	114	163	334	118	383	184	189	305	4,212
Subtotal	3,142	1,593	650	81	229	300	441	305	906	367	295	588	8,897
Percent	47%	42%	35%	39%	37%	68%	45%	30%	46%	45%	38%	60%	44.2%
Unknown/Other													
Male	472	248	140	4	19	12	47	47	141	15	39	32	1,216
Female	515	197	67	4	32	20	136	35	97	8	78	21	1,210
Subtotal	987	445	207	8	51	32	183	82	238	23	117	53	2,426
Percent	15%	12%	11%	4%	8%	7%	19%	8%	12%	3%	15%	5%	12.1%
TOTAL ⁽¹⁾	6,715	3,750	1,855	207	618	439	971	1,029	1,966	818	771	975	20,114

Percentage of Minority and International Students by Enrollment Level



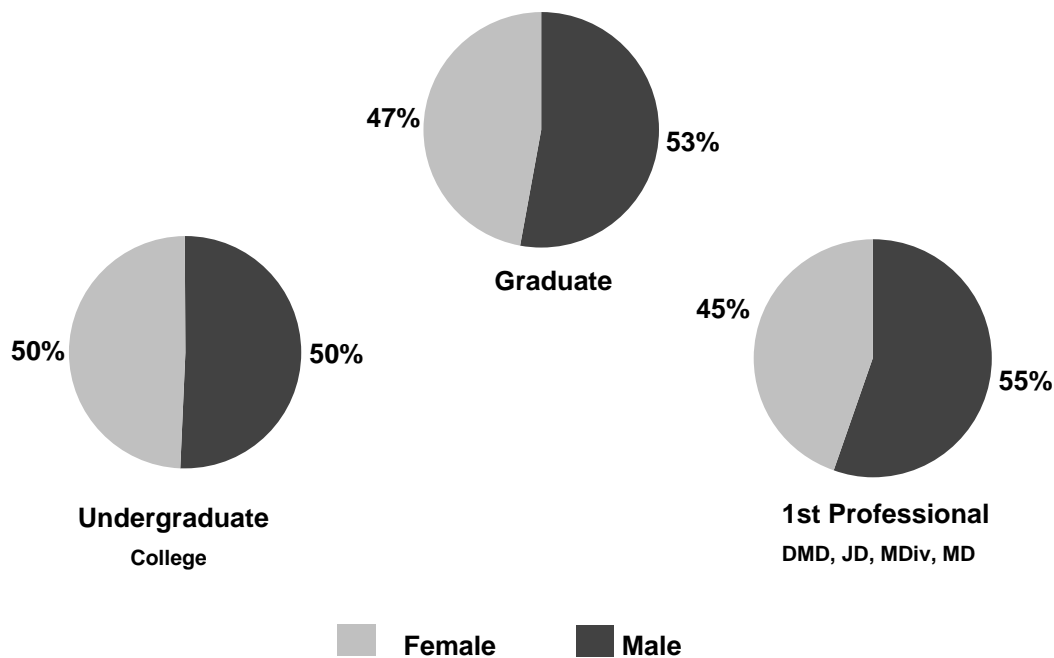
(1) Not adjusted for joint degree students.

SOURCE: REGISTRAR OFFICES

Degrees Conferred by School ⁽¹⁾ Academic Year 2005-2006



	<u>Male</u>	<u>Female</u>	<u>Total</u>
College	828	812	1,640
GSAS	543	392	935
Business	602	304	906
Dental	25	20	45
Design	116	91	207
Divinity	76	81	157
Education	159	502	661
Government	312	206	518
Law	422	326	748
Medical	91	83	174
Public Health	203	224	427
Extension			
Undergraduate	62	61	123
Graduate	174	168	342
TOTAL	3,613	3,270	6,883



(1) Not adjusted for joint degree students.
SOURCE: REGISTRAR OFFICES

Degrees Conferred by Degree: Academic Year 2005-2006 ⁽¹⁾



College		Male	Female	Total
College	A.B.	819	810	1,629
	S.B.	9	2	11
GSAS	A.M.	226	176	402
	M.F.S.	3	1	4
	S.M.	47	9	56
	Ph.D.	267	206	473
Business	M.B.A.	601	302	903
	D.B.A.	1	2	3
Dental	D.M.D.	17	15	32
	M.M.Sc.	7	2	9
	D.M.Sc.	1	3	4
Design	M.Arch.	50	31	81
	M.A.U.D., M.L.A.U.D.	18	5	23
	M.Des.	24	21	45
	M.L.A.	10	15	25
	M.U.P.	9	12	21
	D.Des.	5	7	12
Divinity	M.Div.	24	18	42
	M.T.S.	43	54	97
	Th.M.	5	4	9
	Th.D.	4	5	9
Education	Ed.M.	138	442	580
	Ed.D.	20	50	70
	C.A.S.	1	10	11
Government	M.P.A. (1 YEAR)	119	53	172
	M.P.A. (2 YEAR)	65	38	103
	M.P.A.I.D.	38	25	63
	M.P.P.	87	88	175
	M.U.P.	3	2	5
Law	J.D.	330	252	582
	LL.M.	87	72	159
	S.J.D.	5	2	7
Medical	M.D.	76	76	152
	M.M.Sc.	15	7	22
Public Health	M.P.H.	118	96	214
	M.S.	72	92	164
	D.P.H.	2	1	3
	D.S.	11	35	46
Extension	A.A.	11	4	15
	A.L.B.	51	57	108
	A.L.M.	83	57	140
	Grad. Cert.	91	111	202
TOTAL		3,613	3,270	6,883

(1) Not adjusted for joint degree students.

SOURCE: REGISTRAR OFFICES

Harvard College Undergraduate Degrees Conferred by Concentration ⁽¹⁾ 
 Academic Year 2005-2006

	Concentration	Male	Female	Total
Humanities	English & American Literature & Language	35	69	104
	History & Literature	23	40	63
	Visual & Environmental Studies	17	16	33
	Romance Languages & Literatures	8	16	24
	History of Art & Architecture	8	13	21
	Philosophy	16	5	21
	Comparative Study of Religion	5	10	15
	Literature	4	11	15
	Linguistics	3	11	14
	Music	9	4	13
	Classics	8	3	11
	East Asian Studies	7	3	10
	Folklore & Mythology	-	4	4
	Sanskrit & Indian Studies	3	1	4
	Classics (Latin)	-	3	3
	Classical Archaeology	-	2	2
	Germanic Languages & Literatures	1	1	2
	Near Eastern Languages & Civilizations	-	2	2
	Classics (Greek)	-	1	1
	Slavic Languages & Literatures	1	-	1
	Subtotal	148	215	363
Natural Sciences	Biology	34	60	94
	Biochemical Sciences	30	30	60
	Physics	33	10	43
	Chemistry	19	20	39
	Applied Mathematics	17	10	27
	Computer Science	22	3	25
	Engineering Sciences ⁽²⁾	18	7	25
	Mathematics	15	6	21
	Chemistry & Physics	13	7	20
	Environmental Science & Public Policy	4	8	12
	Earth & Planetary Sciences	3	6	9
	Astronomy & Astrophysics	6	2	8
	Statistics	-	2	2
	Subtotal	214	171	385
Social Sciences	Economics	161	77	238
	Government	123	72	195
	Psychology	34	88	122
	Social Studies	48	53	101
	History	60	36	96
	Anthropology	15	43	58
	History & Science	9	21	30
	Sociology	8	21	29
	Studies of Women, Gender & Sexuality	-	4	4
	African & African American Studies	-	3	3
	Subtotal	458	418	876
Special Concentrations	Special Concentrations	8	8	16
	Subtotal	8	8	16
	TOTAL	828	812	1,640

(1) Concentration totals listed are for primary concentrations only.

(2) Includes both A.B. and S.B programs.

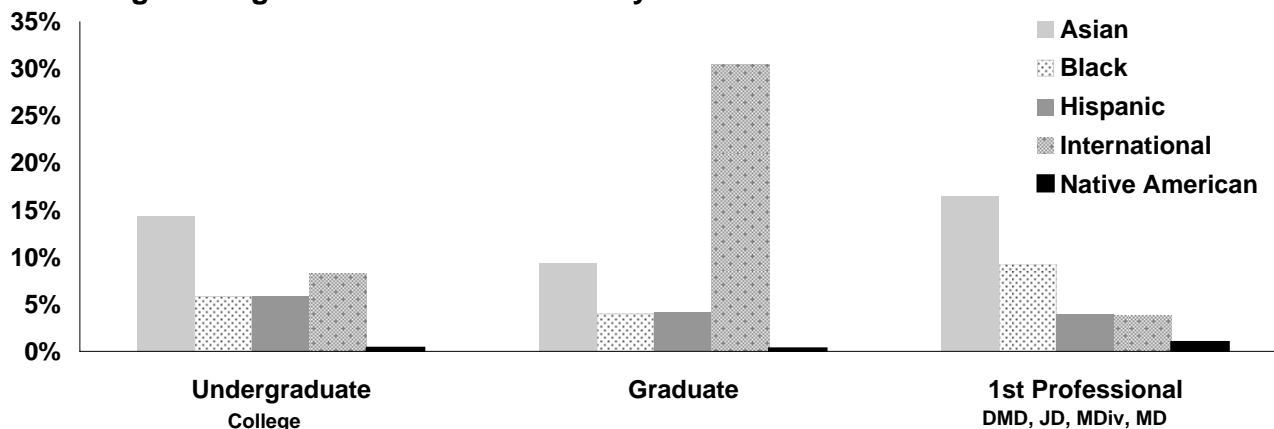
SOURCE: REGISTRAR OFFICES

Degrees Conferred by Student Ethnicity: Academic Year 2005-2006 ⁽¹⁾



	College	GSAs	Business	Dental	Design	Divinity	Education	Government	Law	Medical	Public Health	Extension	Total
Asian/Pacific Islander													
Male	102	40	55	2	8	4	14	13	36	26	27	16	343
Female	133	50	42	8	13	1	60	16	44	21	24	20	432
Subtotal	235	90	97	10	21	5	74	29	80	47	51	36	775
Percent	14%	10%	11%	22%	10%	3%	11%	6%	11%	27%	12%	8%	11.3%
Black/Non-Hispanic													
Male	42	7	23	2	2	1	12	12	21	4	6	15	147
Female	54	22	14	1	1	4	33	12	33	14	10	4	202
Subtotal	96	29	37	3	3	5	45	24	54	18	16	19	349
Percent	6%	3%	4%	7%	1%	3%	7%	5%	7%	10%	4%	4%	5.1%
Hispanic													
Male	50	28	12	2	5	5	10	11	11	7	3	14	158
Female	47	15	14	-	6	2	26	17	10	3	9	6	155
Subtotal	97	43	26	2	11	7	36	28	21	10	12	20	313
Percent	6%	5%	3%	4%	5%	4%	5%	5%	3%	6%	3%	4%	4.5%
International Students													
Male	68	166	201	3	48	11	18	141	90	5	87	49	887
Female	67	85	99	3	32	9	49	62	79	4	57	47	593
Subtotal	135	251	300	6	80	20	67	203	169	9	144	96	1,480
Percent	8%	27%	33%	13%	39%	13%	10%	39%	23%	5%	34%	21%	21.5%
Native American													
Male	3	-	2	-	2	-	2	1	3	2	-	1	16
Female	3	1	1	-	-	-	-	2	1	2	1	1	12
Subtotal	6	1	3	-	2	-	2	3	4	4	1	2	28
Percent	0%	0%	0%	0%	1%	0%	0%	1%	1%	2%	0%	0%	0.4%
White/Non-Hispanic													
Male	437	223	238	14	42	50	67	103	201	43	56	128	1,602
Female	370	144	114	6	29	61	220	68	123	37	85	147	1,404
Subtotal	807	367	352	20	71	111	287	171	324	80	141	275	3,006
Percent	49%	39%	39%	44%	34%	71%	43%	33%	43%	46%	33%	59%	43.7%
Unknown/Other													
Male	126	79	71	2	9	5	36	31	60	4	24	13	460
Female	138	75	20	2	10	4	114	29	36	2	38	4	472
Subtotal	264	154	91	4	19	9	150	60	96	6	62	17	932
Percent	16%	16%	10%	9%	9%	6%	23%	12%	13%	3%	15%	4%	13.5%
TOTAL	1,640	935	906	45	207	157	661	518	748	174	427	465	6,883

Percentage of Degrees Conferred to Minority and International Students



(1) Not adjusted for joint degree students.
SOURCE: REGISTRAR OFFICES

Degrees Conferred: Academic Year 2001-2006 ⁽¹⁾

	Academic Year	2001	2002	2003	2004	2005	2006
College	A.B.	1,694	1,656	1,686	1,658	1,672	1,629
	S.B.	8	9	5	13	17	11
	Subtotal	1,702	1,665	1,691	1,671	1,689	1,640
GSAS	A.M.	317	325	363	349	331	402
	M.E.	1	-	1	1	-	-
	M.F.S.	1	3	-	-	-	4
	S.M.	44	65	58	60	66	56
	Ph.D.	387	383	392	444	413	473
	Subtotal	750	776	814	854	810	935
Business	M.B.A.	848	916	887	894	884	903
	D.B.A.	5	4	3	4	6	3
	Subtotal	853	920	890	898	890	906
Dental	D.M.D.	32	32	36	33	34	32
	M.M.S.	15	14	15	12	12	9
	M.P.H.	2	-	-	-	-	-
	D.M.S.	8	10	3	3	11	4
	Subtotal	57	56	54	48	57	45
Design	M. Arch.	96	98	91	95	87	81
	M.A.U.D., M.L.A.U.D.	25	24	25	20	28	23
	M.Des.	45	51	51	67	55	45
	M.L.A.	34	24	27	29	47	25
	M.U.P.	18	14	15	17	32	21
	D.Des.	9	11	8	8	7	12
	Subtotal	227	222	217	236	256	207
Divinity	M.Div.	63	38	50	44	58	42
	M.T.S.	95	102	83	102	94	97
	Th.M.	7	4	7	5	4	9
	Th.D.	6	8	3	6	10	9
	Subtotal	171	152	143	157	166	157
Education	Ed.M.	603	603	589	617	643	580
	Ed.D.	47	78	59	60	53	70
	C.A.S.	6	3	4	4	3	11
	Subtotal	656	684	652	681	699	661
Government	M.P.A. (1 Year)	191	202	209	225	208	172
	M.P.A. (2 Year)	72	84	86	89	90	103
	M.P.A.I.D.	49	56	77	63	64	63
	M.P.P.	150	158	163	138	194	175
	M.U.P.	4	5	7	10	6	5
	D.P.A.	1	-	-	-	-	-
	Subtotal	467	505	542	525	562	518
Law	J.D.	543	554	575	551	547	582
	LL.M.	130	144	130	157	161	159
	S.J.D.	10	7	14	8	3	7
	Subtotal	683	705	719	716	711	748
Medicine	M.D.	162	157	165	177	147	152
	MMSc.	11	13	24	24	26	22
	Subtotal	173	170	189	201	173	174
Public Health	M.P.H.	205	214	211	209	213	214
	M.S., M.O.H.	147	134	152	137	162	164
	D.P.H., D.S.	39	42	65	39	54	49
	Subtotal	391	390	428	385	429	427
Extension	A.A.	10	16	20	13	20	15
	A.L.B.	126	134	113	120	118	108
	A.L.M.	88	84	82	91	112	140
	Grad. Cert.	341	312	245	233	184	202
	Subtotal	565	546	460	457	434	465
	TOTAL	6,695	6,791	6,799	6,829	6,876	6,883

(1) Not adjusted for joint degree students.

International Enrollment: Fall 2006 ⁽¹⁾ 

	Africa	Asia	Europe	Latin America	Middle East	North America	Oceania	Stateless	Total
College	48	153	191	24	32	128	12	-	588
GSAS	19	555	416	64	88	137	32	-	1,311
Business	28	179	173	73	33	97	19	-	602
Dental	-	13	5	-	8	13	-	-	39
Design	2	115	37	8	11	25	3	-	201
Divinity	6	21	4	-	1	4	-	-	36
Education	2	52	12	13	5	18	-	-	102
Government	20	146	102	48	28	49	13	1	407
Law	21	69	75	26	20	47	8	-	266
Medical	1	7	6	5	-	21	2	-	42
Public Health	14	93	23	12	11	23	-	1	177
Extension	2	18	8	15	-	7	-	-	50
TOTAL	163	1,421	1,052	288	237	569	89	2	3,821

(1) Counts include full-time degree and non-degree students only, which include transfer and special students, visiting undergraduates, and Extension School enrollees. Counts exclude executive education and professional development programs.

SOURCE: INTERNATIONAL OFFICE

Historical Enrollment of International Students: Fall 2001 - 2006⁽¹⁾



	Fall					
	2001	2002	2003	2004	2005	2006
Africa						
Ghana	16	15	19	17	17	25
Kenya	17	14	22	23	18	21
Nigeria	34	22	24	20	25	22
South Africa	26	30	23	23	22	22
Zimbabwe	12	18	18	13	16	13
Other	59	49	48	52	64	60
Subtotal	164	148	154	148	162	163
Asia						
China	318	337	354	361	378	403
India	120	112	133	167	189	193
Japan	163	134	127	137	135	130
South Korea	212	207	191	218	244	269
Taiwan	81	86	82	103	113	113
Other	286	285	279	281	298	313
Subtotal	1,180	1,161	1,166	1,267	1,357	1,421
Europe						
Bulgaria	43	41	42	48	51	54
France	67	83	78	68	76	82
Germany	119	124	132	137	159	149
Italy	49	51	54	46	53	53
Spain	67	55	53	51	44	52
United Kingdom	157	174	180	191	177	194
Other	444	451	473	477	462	468
Subtotal	946	979	1,012	1,018	1,022	1,052
Latin America						
Argentina	61	60	55	48	35	44
Brazil	65	68	63	63	64	61
Chile	24	26	26	33	32	33
Colombia	40	50	31	43	40	50
Peru	27	18	20	22	20	28
Other	92	86	65	60	58	72
Subtotal	309	308	260	269	249	288
Middle East						
Cyprus	7	6	11	15	18	16
Iran	4	3	5	9	8	13
Israel	71	75	71	76	71	81
Lebanon	16	8	12	15	13	16
Turkey	64	79	71	74	71	80
Other	34	28	34	32	34	31
Subtotal	196	199	204	221	215	237
North America						
Canada	464	492	444	467	481	471
Mexico	95	85	71	74	78	98
Subtotal	559	577	515	541	559	569
Oceania						
Australia	73	66	70	67	82	68
Fiji	-	-	-	-	1	-
New Zealand	21	19	21	15	20	21
Subtotal	94	85	91	82	103	89
Stateless	-	2	-	-	2	2
TOTAL	3,448	3,459	3,402	3,546	3,669	3,821

Africa Other: Algeria, Benin, Botswana, Cameroon, Egypt, Equatorial Guinea, Ethiopia, The Gambia, Malawi, Mauritius, Morocco, Rwanda, Senegal, Sierra Leone, Sudan, Swaziland, Tanzania, Togo, Uganda, Zambia.

Asia Other: Afghanistan, Bangladesh, Bhutan, Burma (Myanmar), Hong Kong, Indonesia, Kazakhstan, Kyrgyzstan, Malaysia, Nepal, Pakistan, Philippines, Singapore, Sri Lanka, Thailand, Uzbekistan, Vietnam.

Europe Other: Albania, Armenia, Austria, Azerbaijan, Belarus, Belgium, Bosnia and Herzegovina, Croatia, Czech Republic, Denmark, Estonia, Finland, Georgia, Greece, Hungary, Iceland, Ireland, Jersey, Latvia, Liechtenstein, Lithuania, Luxembourg, Macedonia, Moldova, Netherlands, Norway, Poland, Portugal, Romania, Russia, Slovakia, Slovenia, Sweden, Switzerland, Ukraine, Yugoslavia (Former).

Latin America Other: The Bahamas, Barbados, Bermuda, Bolivia, Costa Rica, Dominica, Dominican Republic, Ecuador, El Salvador, Guatemala, Guyana, Honduras, Jamaica, Panama, Saint Lucia, Trinidad and Tobago, Uruguay, Venezuela.

Middle East Other: Bahrain, Iraq, Jordan, Kuwait, Qatar, Saudi Arabia, Syria, United Arab Emirates, West Bank.

(1) Counts include full-time degree and non-degree students only, which includes transfer and special students, visiting undergraduates, and Extension School enrollees. Counts exclude executive education and professional development programs. Countries listed are for Fall 2006. Information on countries for enrollments in prior years can be obtained from the International Office.

SOURCE: INTERNATIONAL OFFICE

Summer School Enrollment: Summer 2001 - 2006



Harvard Students by School ⁽¹⁾

	2001	2002	2003	2004	2005	2006
College	330	322	348	334	435	497
GSAS	62	61	56	55	76	57
Education	12	5	8	10	10	3
Extension	291	298	307	365	354	339
Other Harvard Schools	22	17	10	21	11	16
Subtotal	717	703	729	785	886	912

Other Students by Educational Level ⁽²⁾

Secondary School	1,190	1,320	1,130	1,020	1,156	1,444
Graduate	1,642	1,522	1,748	1,593	1,656	1,831
Undergraduate	1,067	1,050	965	1,122	1,109	1,286
Unknown	279	299	72	89	71	67
Subtotal	4,178	4,191	3,915	3,824	3,992	4,628
TOTAL	4,895	4,894	4,644	4,609	4,878	5,540

Non-Degree Headcount: Fall 2001 - 2006 ⁽³⁾

	2001	2002	2003	2004	2005	2006		
						Male	Female	Total
College	-	-	-	-	36	-	-	-
GSAS	144	204	197	188	220	91	93	184
Dental ⁽⁴⁾	31	40	45	38	41	19	17	36
Design	12	3	3	2	6	1	1	2
Divinity	45	18	11	16	7	5	3	8
Education	84	103	84	95	89	34	70	104
Government	13	8	9	10	8	3	8	11
Law	38	47	54	40	68	34	15	49
Medical	-	-	-	-	1	-	-	-
Public Health	3	1	-	-	22	4	1	5
Extension ⁽⁵⁾	4,483	4,945	4,758	4,470	4,675	2,466	2,799	5,265
TOTAL	4,853	5,369	5,161	4,859	5,173	2,657	3,007	5,664

(1) Counts include matriculating Harvard students enrolled in Harvard courses during the summer session.

(2) Beginning with 2004, high school students are counted as undergraduates instead of Secondary School students.

(3) Non-degree enrollments include all students enrolled on October 15 in at least one class that is creditable toward a degree or formal award. 2005 counts include 58 graduate students and 36 College students displaced by Hurricane Katrina.

(4) Includes post-doctorates in clinical specialty certification programs.

(5) Counts are for the first semester only. This significantly undercounts yearly enrollment in the Extension School as approximately the same number of new students might be enrolled in the second semester.

University Faculty: Fall 2006 ⁽¹⁾



	Head Count			Full-time
	Male	Female	Total	Equivalent
Arts and Sciences				
Professor				
Tenured ⁽²⁾	391	96	487	478.2
Non-Tenured ⁽³⁾	14	7	21	16.4
Associate Professor	47	26	73	73.0
Assistant Professor	94	52	146	145.2
Lecturers & Instructors ⁽⁴⁾	113	133	246	191.6
Other Faculty ⁽⁵⁾	62	33	95	57.1
TOTAL	721	347	1,068	961.5

	Head Count			Full-time
	Male	Female	Total	Equivalent
Design				
Professor				
Tenured	23	5	28	22.5
Non-Tenured ⁽³⁾	-	1	1	1.0
Associate Professor ⁽⁶⁾	9	2	11	9.7
Assistant Professor	5	4	9	9.0
Lecturers & Instructors ⁽⁴⁾	23	10	33	7.9
Other Faculty ⁽⁵⁾	41	15	56	18.6
TOTAL	101	37	138	68.6

	Head Count			Full-time
	Male	Female	Total	Equivalent
Education				
Professor				
Tenured	16	9	25	24.3
Non-Tenured ⁽³⁾	6	-	6	5.8
Associate Professor	1	4	5	5.0
Assistant Professor	3	4	7	7.0
Lecturers & Instructors ⁽⁴⁾	9	21	30	20.0
Other Faculty ⁽⁵⁾	-	1	1	0.5
TOTAL	35	39	74	62.6

	Head Count			Full-time
	Male	Female	Total	Equivalent
Law				
Professor				
Tenured ⁽²⁾	63	12	75	73.5
Non-Tenured ⁽³⁾	2	1	3	3.0
Associate Professor	n/a	n/a	n/a	n/a
Assistant Professor ⁽⁶⁾	3	3	6	6.0
Lecturers & Instructors ⁽⁴⁾	44	30	74	32.9
Other Faculty ⁽⁵⁾	42	16	58	25.2
TOTAL	154	62	216	140.6

	Head Count			Full-time
	Male	Female	Total	Equivalent
Medical Quad-Based				
Professor				
Tenured	89	15	104	101.6
Non-Tenured ⁽³⁾	3	2	5	5.0
Associate Professor	22	5	27	26.3
Assistant Professor	26	13	39	38.3
Lecturers & Instructors ⁽⁴⁾	40	36	76	71.8
Other Faculty ⁽⁵⁾	29	30	59	57.8
TOTAL	209	101	310	300.8

	Head Count			Full-time
	Male	Female	Total	Equivalent
Other Academic Units ⁽⁷⁾				
Professor				
Tenured	1	3	4	3.0
Non-Tenured ⁽³⁾	-	-	-	-
Other Faculty ⁽⁵⁾	8	3	11	7.2
TOTAL	9	6	15	10.2

	Head Count			Full-time
	Male	Female	Total	Equivalent
Business				
Professor				
Tenured ⁽²⁾	73	14	87	84.0
Non-Tenured ⁽³⁾	21	2	23	19.8
Associate Professor	24	8	32	32.0
Assistant Professor	37	20	57	55.5
Lecturers & Instructors ⁽⁴⁾	10	1	11	9.2
Other Faculty ⁽⁵⁾	7	3	10	9.5
TOTAL	172	48	220	209.9

	Head Count			Full-time
	Male	Female	Total	Equivalent
Divinity				
Professor				
Tenured	16	9	25	19.0
Non-Tenured ⁽³⁾	1	3	4	3.5
Associate Professor	2	-	2	2.0
Assistant Professor	3	1	4	2.0
Lecturers & Instructors ⁽⁴⁾	-	-	-	-
Other Faculty ⁽⁵⁾	24	22	46	23.1
TOTAL	46	35	81	49.6

	Head Count			Full-time
	Male	Female	Total	Equivalent
Government				
Professor				
Tenured ⁽²⁾	38	8	46	37.8
Non-Tenured ⁽³⁾	7	1	8	7.2
Associate Professor	10	4	14	14.0
Assistant Professor	7	2	9	9.0
Lecturers & Instructors ⁽⁴⁾	25	15	40	37.3
Other Faculty ⁽⁵⁾	18	6	24	13.8
TOTAL	105	36	141	119.0

	Head Count			Full-time
	Male	Female	Total	Equivalent
Public Health				
Professor				
Tenured	59	15	74	61.2
Non-Tenured ⁽³⁾	8	5	13	10.9
Associate Professor	23	15	38	32.2
Assistant Professor	29	19	48	37.5
Lecturers & Instructors ⁽⁴⁾	24	11	35	23.8
Other Faculty ⁽⁵⁾	14	14	28	19.3
TOTAL	157	79	236	184.9

	Head Count			Full-time
	Male	Female	Total	Equivalent
Dental				
Professor				
Tenured	5	1	6	6.0
Non-Tenured ⁽³⁾	3	-	3	3.0
Associate Professor	4	2	6	6.0
Assistant Professor ⁽⁸⁾	6	4	10	10.0
Lecturers & Instructors ⁽⁴⁾	14	15	29	25.8
Other Faculty ⁽⁵⁾	1	4	5	5.0
TOTAL	33	26	59	55.8

	Head Count			Full-time
	Male	Female	Total	Equivalent
University Faculty				
Professor				
Tenured ⁽²⁾	774	187	961	911.1
Non-Tenured ⁽³⁾	65	22	87	75.5
Associate Professor	142	66	208	200.1
Assistant Professor	213	122	335	319.5
Lecturers & Instructors ⁽⁴⁾	302	272	574	420.2
Other Faculty ⁽⁵⁾	246	147	393	237.0
TOTAL (incl. duplicates)	1,742	816	2,558	2163.5
Adj. for duplicate counts	32	6	38	
TOTAL ⁽¹⁾	1,710	810	2,520	2,163.5

NOTES:

(1) Faculty members are counted once at each school in which they hold an appointment. Several faculty have appointments at more than one school, so an adjusted University total is provided to account for duplication. Counts include all faculty appointed as of October 31, 2006.

(2) University Professors are special endowed positions and are the University's highest professorial distinction. They are included in the Tenured totals of the Schools in which they were originally appointed: Arts and Sciences (16), Business (2); Government (1); and Law (2).

(3) Non-Tenured Professor counts include Non-Tenured Professors and/or Professors of Practice (except in the Design School where Professors of Practice are tenured). The following schools have Professors of Practice: Arts & Sciences (17), Business (14), Design (7), Divinity (4), Education (4), Government (7).

(4) Counts include Lecturers, Instructors and Preceptors. Divinity School Lecturers and Instructors are included with that School's counts for "Other Faculty."

(5) Other Faculty include Associates, Academic; Associates, Principal; Counselors, Denominational; Critics; Curators; Department Heads (Faculty); Directors (Faculty); Directors, Associate (Faculty); Fellows (Other Faculty); Members of Faculty; Physicians (Other Faculty); Professors, Adjunct; Research Associates (Other Faculty); Research Fellows; Student Supervisors/Advisors; Tutors, Academics (Other Faculty); Visiting Faculty.

(6) Design School Associate Professor total includes three Adjunct Associate Professors.

(7) Other Academic Units include the Radcliffe Institute for Advanced Study, University Health Services, and Memorial Church.

(8) Dental and Law School Assistant Professor totals each include one Assistant Clinical Professor.

SOURCE: INTERNAL SURVEY OF EACH FACULTY

Faculty of Medicine Quad and Hospital-Based Personnel: Fall 2006 ⁽¹⁾



Medical Quad-based and Dental on-payroll counts are also included on the University Faculty counts exhibit.

	Head Count			Full-time
	Male	Female	Total	Equivalent
Medical ⁽²⁾				
Quad-based				
Professor				
Tenured	89	15	104	101.6
Non-Tenured	3	2	5	5.0
Associate Professor	22	5	27	26.3
Assistant Professor	26	13	39	38.3
Lecturers and Instructors	40	36	76	71.8
Other Faculty ⁽³⁾	29	30	59	57.8
TOTAL	209	101	310	300.8

Hospital-Based on Payroll				
Professor ⁽⁴⁾	137	12	149	144.3
Associate Professor ⁽⁴⁾	32	10	42	39.5
Assistant Professor ⁽⁴⁾	17	11	28	24.2
Other Faculty ⁽³⁾	26	24	50	45.0
TOTAL	212	57	269	253.0

Clinical Unpaid Appointments ⁽⁵⁾				
Professor	499	73	572	
Associate Professor	914	267	1,181	
Assistant Professor	1,206	643	1,849	
Other Faculty ⁽⁶⁾	3,545	3,070	6,615	
TOTAL	6,164	4,053	10,217	

	Head Count			Full-time
	Male	Female	Total	Equivalent
Dental ⁽²⁾				
On-Payroll				
Professor				
Tenured	5	1	6	6.0
Non-Tenured ⁽⁷⁾	3	-	3	3.0
Associate Professor	4	2	6	6.0
Assistant Professor ⁽⁷⁾	6	4	10	10.0
Lecturers and Instructors	14	15	29	25.8
Other Faculty ⁽³⁾	1	4	5	5.0
TOTAL	33	26	59	55.8

Clinical Unpaid Appointments ⁽⁵⁾				
Professor	7	-	7	
Associate Professor	12	5	17	
Assistant Professor	21	5	26	
Other Faculty ⁽⁶⁾	177	61	238	
TOTAL	217	71	288	

NOTES:

(1) Faculty members are counted once at each school in which they hold an appointment. Counts include all faculty appointed as of October 31, 2006.

(2) The Faculties of the Medical and Dental Schools are made up of both quad and hospital-based personnel. Quad-based faculty are located in Medical and Dental School facilities and are primarily research oriented. Hospital-based faculty are located in affiliated hospitals and work in both research and clinical settings. Medical School faculty supervise degree students, post-doctoral residents, fellows and interns. FTE's are not available for the Clinical Unpaid Appointments in the Faculty of Medicine.

(3) Other Faculty (on Payroll) include Associates, Academic; Associates, Principal; Research Associates; Visiting Faculty, and Hospital-based Lecturers and Instructors.

(4) Hospital-Based on Payroll counts for Professors, Associate Professors and Assistant Professors include small numbers of Clinical Professors (6), Associate Clinical Professors (2) and Assistant Clinical Professors (4), respectively.

(5) Clinical Unpaid Appointments at the Medical and Dental schools exclude faculty who also have paid appointments at these schools.

(6) Other Faculty (Unpaid) includes Administrative Officers (Faculty), Assistants, Clinical; Associates; Fellows; Instructors; Lecturers; Research Associates; Research Fellows; Teaching Associates, and Visiting Faculty.

(7) Dental (On Payroll) Non-Tenured Professor total includes two Clinical Professors and Assistant Professor total includes one Assistant Clinical Professor.

Non-Faculty Staff in the Schools ⁽¹⁾

Counts are Full-Time Equivalent Figures as of October 31, 2006

University-Wide Totals	University Funding			Sponsored Funding			Non-Faculty Academic Staff ⁽²⁾			Grand Total
	Administrative & Professional	Clerical & Technical	Service & Trades	Administrative & Professional	Clerical & Technical	Subtotal	University Funding	Sponsored Funding	Subtotal	
Faculties	3,480.0	2,978.8	69.4	559.9	517.6	7,605.7	423.0	783.0	1,206.0	8,811.6
Allieds	275.8	171.2	52.2	2.4	1.2	502.9	13.8	4.0	17.8	520.7
Central Administration ⁽³⁾	594.5	349.1	55.0	1.0	2.0	1,001.6	0.2	-	0.2	1,001.8
Service Departments ⁽³⁾	708.8	360.5	841.8	0.5	-	1,911.7	9.0	-	9.0	1,920.7
Non-Departmental & Special ⁽⁴⁾	43.1	47.2	-	-	-	90.3	-	-	-	90.3
TOTAL	5,102.3	3,906.8	1,018.4	563.8	520.8	11,112.1	446.0	787.0	1,233.0	12,345.1

Faculties	University Funding			Sponsored Funding			Non-Faculty Academic Staff ⁽²⁾			Grand Total
	Administrative & Professional	Clerical & Technical	Service & Trades	Administrative & Professional	Clerical & Technical	Subtotal	University Funding	Sponsored Funding	Subtotal	
Faculty of Arts and Sciences ⁽⁵⁾	677.0	660.8	0.2	120.8	92.4	1,551.2	234.5	211.1	445.6	1,996.8
Athletics	112.7	24.2	-	-	-	136.9	16.0	-	16.0	152.9
College Library	246.5	271.8	-	0.5	-	518.8	-	-	-	518.8
DEAS ⁽⁶⁾	52.6	59.5	9.8	49.7	5.5	177.1	22.7	57.7	80.4	257.5
Division of Continuing Education	73.4	64.6	-	-	-	137.9	-	-	-	137.9
GSAS	24.5	22.7	-	-	-	47.2	-	-	-	47.2
College Life & Student Dorms	112.0	64.9	-	-	-	176.8	-	-	-	176.8
Museums ⁽⁷⁾	75.7	80.6	-	0.6	3.5	160.4	3.3	13.7	17.0	177.3
Yenching	5.8	1.0	-	-	-	6.8	-	-	-	6.8
Subtotal	1,380.1	1,250.1	10.0	171.6	101.4	2,913.2	276.5	282.4	558.9	3,472.1
Business	483.8	273.0	-	-	-	756.8	-	-	-	756.8
Publishing Division	265.1	15.0	-	-	-	280.1	-	-	-	280.1
Subtotal	748.9	288.0	-	-	-	1,036.9	-	-	-	1,036.9
Dental	27.8	65.2	-	2.0	5.7	100.7	1.0	4.0	5.0	105.7
Design	49.2	51.0	-	-	-	100.2	-	0.8	0.8	101.0
Divinity	60.7	44.1	-	-	-	104.8	-	2.5	2.5	107.3
Education	132.8	110.6	-	23.0	10.9	277.3	4.3	3.0	7.3	284.5
Government	213.1	183.9	-	34.2	13.2	444.4	24.3	3.5	27.7	472.2
Law	230.2	223.7	-	4.4	3.6	461.9	14.8	3.6	18.3	480.2
Medical	421.6	535.7	59.4	84.2	194.9	1,295.8	78.8	369.2	448.0	1,743.8
Public Health	170.5	195.1	-	240.5	187.8	793.9	23.4	114.0	137.5	931.4
Radcliffe Institute for Advanced Study	45.2	31.4	-	-	-	76.6	-	-	-	76.6
Subtotal Faculties	3,480.0	2,978.8	69.4	559.9	517.6	7,605.7	423.0	783.0	1,206.0	8,811.6

(1) Figures do not include temporary employees (except limited regular guards and custodians), LHT's (less-than-half-time), students or teaching fellows. Counts include only filled positions.

(2) Counts include Academic Clinical Fellows, Academic Department/Program Fellows, Coaching Assistants, Internal Post Docs, Teaching Assistants and Visiting Fellows.

(3) Core departments provide central functions of the University (accounts payable, HR benefits, etc.) and are supported through funds from the President, Faculties, and departments. Service departments derive their revenue on a fee-for-service basis from internal customers.

(4) Non-Departmental and Special include Signet Society, Credit Union, Harvard Student Agencies, and LASPAU.

(5) The Faculty of Arts and Sciences includes FTEs for Dumbarton Oaks. In addition Dumbarton Oaks has additional personnel on local data systems who are not reflected in the counts above.

(6) DEAS refers to Division of Engineering and Applied Sciences (name as of October 31, 2006).

(7) Museums include Museum of Comparative Zoology, Peabody Museum and Semitic Museum.

Non-Faculty Staff in the Allied Institutions, Central Administration and Service Departments ⁽¹⁾

Counts are Full-Time Equivalent Figures as of October 31, 2006



	University Funding			Sponsored Funding			Non-Faculty Academic Staff ⁽²⁾			Grand Total
	Administrative & Professional	Clerical & Technical	Service & Trades	Administrative & Professional	Clerical & Technical	Subtotal	University Funding	Sponsored Funding	Subtotal	
	Allied Institutions									
American Repertory Theatre	44.0	22.2	-	-	-	66.2	0.8	-	0.8	67.0
Arnold Arboretum	32.1	23.7	16.0	0.5	-	72.3	3.0	4.0	7.0	79.3
Art Museums	85.1	66.0	36.2	1.1	-	188.4	-	-	-	188.4
Harvard Magazine	16.9	1.2	-	-	-	18.1	-	-	-	18.1
Inter-Faculty Initiatives	8.0	6.3	-	-	-	14.3	4.0	-	4.0	18.3
Institute of Politics	6.0	11.0	-	-	-	17.0	6.0	-	6.0	23.0
Joint Center for Housing Studies	7.1	5.7	-	0.8	1.0	14.6	-	-	-	14.6
Memorial Church	7.0	7.8	-	-	-	14.8	-	-	-	14.8
Nieman Foundation	9.9	6.5	-	-	0.2	16.6	-	-	-	16.6
University Press	56.2	20.8	-	-	-	77.0	-	-	-	77.0
Villa I Tatti ⁽³⁾	3.6	-	-	-	-	3.6	-	-	-	3.6
Subtotal	275.8	171.2	52.2	2.4	1.2	502.9	13.8	4.0	17.8	520.7

Central Administration - Core and Service Departments ⁽⁴⁾

Core departments in bold, service departments in italics

President & Provost, University Marshal and Office of the Governing Boards	65.1	39.4	-	-	-	104.5	0.2	-	0.2	104.7
<i>University Information Services</i>	227.6	81.9	1.0	-	-	310.6	-	-	-	310.6
<i>University Health Services</i>	140.1	118.9	-	0.5	-	259.5	9.0	-	9.0	268.5
VP Administration	18.8	7.6	-	-	-	26.4	-	-	-	26.4
<i>Dining Services</i>	71.5	19.9	348.4	-	-	439.8	-	-	-	439.8
<i>Faculty Club</i>	13.0	4.0	41.3	-	-	58.2	-	-	-	58.2
<i>Harvard Real Estate Services</i>	73.1	56.3	-	-	-	129.4	-	-	-	129.4
<i>University Operations Services</i>	120.5	45.8	451.1	-	-	617.4	-	-	-	617.4
Allston Development Group	15.9	4.6	-	-	-	20.5	-	-	-	20.5
VP Development & Alumni Affairs	91.5	65.1	-	-	-	156.6	-	-	-	156.6
<i>Fund Raising Campaigns</i>	63.1	33.8	-	-	-	96.8	-	-	-	96.8
VP Finance	162.1	108.4	-	-	-	270.5	-	-	-	270.5
VP General Counsel	54.7	28.6	55.0	-	-	138.3	-	-	-	138.3
VP Government, Community and Public Affairs	26.1	18.8	-	-	-	44.9	-	-	-	44.9
VP Human Resources	91.9	41.4	-	-	-	133.3	-	-	-	133.3
University Library	68.4	35.2	-	1.0	2.0	106.6	-	-	-	106.6
Subtotal	1,303.4	709.6	896.8	1.5	2.0	2,913.3	9.2	-	9.2	2,922.5
Non-Departmental & Special ⁽⁵⁾	43.1	47.2	-	-	-	90.3	-	-	-	90.3

(1) Figures do not include temporary employees (except limited regular guards and custodians), LHT's (less-than-half-time), students or teaching fellows. Counts include only filled positions.

(2) Counts include Academic Clinical Fellows, Academic Department/Program Fellows, Coaching Assistants, Internal Post Docs, Teaching Assistants and Visiting Fellows.

(3) Additional personnel on local data systems are not included in this count.

(4) Core departments provide central functions of the University (accounts payable, HR benefits etc.) and are supported through funds from the President, Faculties, and departments. Service departments derive their revenue on a fee-for-service basis from internal customers.

(5) Non-Departmental and Special include Signet Society, Credit Union, Harvard Student Agencies, and LASPAU.

Tuition Charges: FY1987 - FY2007 ⁽¹⁾



Fiscal Year	College	GSAS	Business	Design	Divinity	Education	Government ⁽²⁾	Law	Medical/Dental ⁽³⁾	Public Health
1987	\$11,040	\$11,040	\$11,900	\$10,850	\$7,100	\$10,176	\$10,440	\$10,700	\$14,000	\$9,600
1988	11,645	11,645	13,300	11,500	7,600	10,752	11,075	11,400	14,850	10,575
1989	12,310	12,310	14,250	12,250	8,100	11,440	11,800	12,307	15,750	11,470
1990	13,085	13,085	15,350	13,110	8,630	12,232	12,570	13,400	16,850	12,515
1991	13,960	13,960	16,400	14,300	9,200	13,152	13,390	14,475	18,030	13,570
1992	14,860	14,860	17,500	15,450	9,940	14,192	14,662	15,560	19,110	14,790
1993	15,870	15,870	18,550	16,650	10,540	15,044	15,690	16,730	20,257	15,675
1994	16,856	16,856	19,750	17,483	11,070	15,796	16,631	17,750	21,260	16,775
1995	17,851	17,851	21,000	18,360	11,630	16,664	17,710	19,080	22,300	17,770
1996	18,838	18,838	22,700	19,276	12,220	17,581	18,650	20,500	23,192	18,840
1997	19,770	19,770	23,840	20,240	12,830	18,460	19,770	21,700	24,150	19,800
1998	20,600	20,600	25,000	21,252	13,480	19,476	20,720	22,800	25,200	20,890
1999	21,342	21,342	26,260	22,208	14,160	20,430	21,656	23,900	26,000	21,895
2000	22,054	22,054	27,250	23,163	14,870	21,410	22,520	25,000	27,000	22,950
2001	22,694	22,694	28,500	24,159	15,620	22,600	23,400	26,000	28,000	23,980
2002	23,457	23,370	30,050	25,195	16,400	23,720	24,320	27,500	29,000	25,050
2003	24,630	24,630	31,800	26,330	17,220	25,144	26,488	29,500	30,500	26,300
2004	26,066	26,066	33,650	27,910	18,080	26,628	28,580	31,250	32,000	27,670
2005	27,448	27,448	35,600	29,500	18,984	28,092	30,272	33,120	34,250	29,300
2006	28,752	28,752	37,500	30,916	19,920	29,360	31,752	35,100	35,800	30,620
2007	\$30,275	\$30,275	\$39,600	\$32,152	\$20,712	\$30,544	\$33,276	\$37,100	\$37,200	\$31,800

Average Annual Growth Rates

	College	GSAS	Business	Design	Divinity	Education	Government	Law	Medical/Dental	Public Health
20 YEAR	5.2%	5.2%	6.2%	5.6%	5.5%	5.6%	6.0%	6.4%	5.0%	6.2%
10 YEAR	4.4%	4.4%	5.2%	4.7%	4.9%	5.2%	5.3%	5.5%	4.4%	4.9%
5 YEAR	5.2%	5.3%	5.7%	5.0%	4.8%	5.2%	6.5%	6.2%	5.1%	4.9%
1 YEAR	5.3%	5.3%	5.6%	4.0%	4.0%	4.0%	4.8%	5.7%	3.9%	3.9%

(1) All amounts exclude the University Health Service fee.

(2) For FY03 and FY04, the School of Government implemented two tuition rate increases: one for first-year students (shown above) and one for returning students (FY03 is \$25,440 and FY04 is \$27,704).

(3) Dental School tuition is \$35,790 for FY06 and \$26,050 for FY99.

SOURCE: ANNUAL TUITION PROPOSALS APPROVED BY THE CORPORATION.

Comparative Undergraduate Tuition and Fees ⁽¹⁾

Ranked in descending order for FY2007



Institution	Actual		Change FY2006 - 2007		Notes	
	FY2006	FY2007	Percent	Nominal	FY2006	FY2007
Columbia Total	\$42,584	\$44,812	5.2%	\$2,228		
Tuition	32,582	34,376	5.5%	1,794		
Mandatory Fees	664	788	18.7%	124	Student Life Fee: \$664	Student Life Fee: \$788
Room & Board	9,338	9,648	3.3%	310		
Chicago Total	\$42,369	\$44,613	5.3%	\$2,244		
Tuition	32,088	33,819	5.4%	1,731		
Mandatory Fees	177	186	5.1%	9	Activity Fee: \$177	Activity Fee: \$186
Room & Board	10,104	10,608	5.0%	504		
UPenn Total	\$41,988	\$44,212	5.3%	\$2,224		
Tuition	29,252	30,850	5.5%	1,598	General Fee: \$2,572	General Fee: \$2,766
Mandatory Fees	3,334	3,558	6.7%	224	Tech Fee: \$538	Tech Fee: \$560
Room & Board	9,402	9,804	4.3%	402	Rec Fee: \$224	Rec Fee: \$232
Cornell Total	\$41,717	\$43,757	4.9%	\$2,040		
Tuition	31,300	32,800	4.8%	1,500		
Mandatory Fees	167	181	8.4%	14	Activity Fee: \$167	Activity Fee: \$181
Room & Board	10,250	10,776	5.1%	526		
Brown Total	\$41,770	\$43,754	4.7%	\$1,984		
Tuition	32,838	34,474	5.0%	1,636		
Mandatory Fees	136	146	7.4%	10	Activity Fee: \$136	Activity Fee: \$146
Room & Board	8,796	9,134	3.8%	338		
Harvard Total	\$41,675	\$43,655	4.8%	\$1,980		
Tuition	30,122	31,665	5.1%	1,543	Student Services	Student Services
Mandatory Fees	1,975	2,044	3.5%	69	Fee: \$1,975	Fee: \$2,044
Room & Board	9,578	9,946	3.8%	368		
Stanford Total	\$41,384	\$43,631	5.4%	\$2,247		
Tuition	31,200	32,994	5.8%	1,794	Associated Students	Associated Students
Mandatory Fees	252	270	7.1%	18	of Stanford Univ. \$252	of Stanford Univ. \$270
Room & Board	9,932	10,367	4.4%	435		
MIT Total	\$41,800	\$43,550	4.2%	\$1,750		
Tuition	32,100	33,400	4.0%	1,300		
Mandatory Fees	200	200	0.0%	0	Activity Fee: \$200	Activity Fee: \$200
Room & Board	9,500	9,950	4.7%	450		
Dartmouth Total	\$41,355	\$43,341	4.8%	\$1,986		
Tuition	31,770	33,297	4.8%	1,527		
Mandatory Fees	195	204	4.6%	9	Activity Fee: \$195	Activity Fee: \$204
Room & Board	9,390	9,840	4.8%	450		
Yale Total	\$41,000	\$43,050	5.0%	\$2,050		
Tuition	31,460	33,030	5.0%	1,570		
Room & Board	9,540	10,020	5.0%	480		
Princeton Total ⁽²⁾	\$40,858	\$42,870	4.9%	\$2,012	Res. College Fee: \$545	Res. College Fee: \$570
Tuition	31,450	33,000	4.9%	1,550	Class Dues: \$40	Class Dues: \$40
Mandatory Fees	645	670	3.9%	25	Activity Fee: \$60	Activity Fee: \$60
Room & Board	8,763	9,200	5.0%	437	(Fresh, Soph & some Jr.)	(Fresh, Soph & some Jr.)

(1) For comparative purposes, the health services fee is included in the tuition amount shown for all schools, with the following exception:

Cornell's health fee (\$1,354 in FY06 and \$1,500 in FY07), is optional and excluded.

(2) Princeton does not include its mandatory fee as part of its announced package. The mandatory fee has been included in the FY06 and FY07 totals for consistency and comparison.

Undergraduate Tuition Over Time: FY1987 - FY2007



Fiscal Year	Undergraduate Package						Economic Indicators ⁽¹⁾					
	Health Services			Student Services			U.S. CPI -U	Boston CPI -U	GDP IP Deflator (2000=100)	HEPI (1983=100)	Disposable Personal Income	Median Family Income Ages 45-54
	Tuition	Fee	Room	Board	Fee	Total						
1987	\$11,040	\$350	\$1,885	\$2,035	\$835	\$16,145	111.2	113.9	71.3	120.9	\$13,649	\$38,861
1988	11,645	370	2,065	2,145	875	17,100	115.8	120.2	73.2	126.2	14,241	41,413
1989	12,310	405	2,400	2,145	950	18,210	121.2	127.8	75.7	132.8	15,297	42,192
1990	13,085	460	2,560	2,275	1,015	19,395	127.0	134.3	78.6	140.8	16,257	46,101
1991	13,960	490	2,700	2,425	1,080	20,655	133.9	142.3	81.6	148.1	17,131	47,164
1992	14,860	550	2,900	2,620	1,150	22,080	138.2	146.6	84.4	153.4	17,609	49,606
1993	15,870	584	3,075	2,765	1,220	23,514	142.5	151.1	86.4	157.9	18,494	50,079
1994	16,856	614	3,225	2,910	1,275	24,880	146.2	153.5	88.4	163.3	18,872	52,034
1995	17,851	634	3,370	3,040	1,335	26,230	150.4	156.7	90.3	168.3	19,555	54,379
1996	18,838	634	3,510	3,200	1,393	27,575	154.5	160.6	92.1	173.3	20,287	55,029
1997	19,770	654	3,659	3,336	1,477	28,896	158.9	165.7	93.9	178.6	21,091	57,161
1998	20,600	666	3,808	3,470	1,536	30,080	161.7	169.6	95.4	184.9	21,940	59,959
1999	21,342	686	3,940	3,574	1,590	31,132	164.5	173.2	96.5	189.1	23,161	61,833
2000	22,054	711	4,072	3,685	1,642	32,164	169.3	179.3	97.9	196.9	23,968	65,303
2001	22,694	745	4,190	3,792	1,689	33,110	175.1	187.6	100.0	206.5	25,479	68,082
2002	23,457	816	4,331	3,919	1,746	34,269	178.2	193.3	102.4	215.0	26,236	68,114
2003	24,630	1,020	4,461	4,041	1,798	35,950	182.1	200.0	104.1	221.2	27,157	69,180
2004	26,066	1,142	4,706	4,162	1,852	37,928	186.1	207.0	106.3	231.5	28,031	70,149
2005	27,448	1,264	4,974	4,286	1,908	39,880	191.7	211.8	109.4	239.8	29,531	71,002
2006	28,752	1,370	5,148	4,430	1,975	41,675	199.0	220.1	112.7	251.8	30,440	72,881
2007	\$30,275	\$1,390	\$5,328	\$4,618	\$2,044	\$43,655	204.1	225.0	116.0	260.3	\$31,773	\$74,995

Average Annual Growth Rates

	Undergraduate Package						Economic Indicators ⁽¹⁾					
	Health Services			Student Services			U.S. CPI -U	Boston CPI -U	GDP IP Deflator (1996=100)	HEPI (1983=100)	Disposable Personal Income	Median Family Income Ages 45-54
	Tuition	Fee	Room	Board	Fee	Total						
20 YEAR	5.2%	7.1%	5.3%	4.2%	4.6%	5.1%	3.1%	3.5%	2.5%	3.9%	4.3%	3.3%
10 YEAR	4.4%	7.8%	3.8%	3.3%	3.3%	4.2%	2.5%	3.1%	2.1%	3.8%	4.2%	2.8%
5 YEAR	5.2%	11.2%	4.2%	3.3%	3.2%	5.0%	2.8%	3.1%	2.5%	3.9%	3.9%	1.9%
1 YEAR	5.3%	1.5%	3.5%	4.2%	3.5%	4.8%	2.6%	2.2%	2.9%	3.4%	4.4%	2.9%

(1) Economic indicators are averages of all index figures for a given year. CPI-U and HEPI are based on the fiscal year. All other indices are based on the most recent calendar year.

MFI for 2007 is projected at 2.9% over the prior year based on the MFI compounded annual growth rate for the previous ten years.

Degree Student Financial Assistance: FY2006 ⁽¹⁾



Expressed in thousands of dollars

GRANTS

	Other			Total	% of Total Aid for School
	Institutional	Federal	Outside		
College	\$82,548	\$6,228	\$10,996	\$99,772	79.3%
GSAS	74,968	18,363	9,301	102,632	74.0%
Business	15,589	42	2,261	17,892	24.9%
Dental	867	177	61	1,104	13.8%
Design	4,647	-	349	4,996	36.1%
Divinity	6,401	-	236	6,638	61.1%
Education	8,274	207	1,659	10,140	43.3%
Government	10,841	98	8,584	19,523	53.1%
Law	12,501	262	1,556	14,319	21.0%
Medical	7,766	585	6,109	14,461	50.1%
Public Health	6,039	3,195	2,762	11,996	61.6%
Extension	457	154	91	702	20.3%
TOTAL	\$230,898	\$29,311	\$43,967	\$304,176	55.4%

Grants

Institutional grants are from University unrestricted and restricted monies.

Federal grants include all Federal programs in each school including programs such as the Pell grant, SEOG or graduate training grants.

Outside grants include state and private support of students. In some schools, these numbers may include corporate sponsorship or other sponsored billing.

LOANS

	Other			Total	% of Total Aid for School
	Institutional	Federal	Outside		
College ⁽²⁾	\$3,077	\$12,963	\$4,700	\$20,740	16.5%
GSAS	30	1,284	485	1,798	1.3%
Business	1,680	18,185	34,078	53,943	75.1%
Dental	80	5,691	1,125	6,896	86.0%
Design	-	6,065	2,354	8,419	60.8%
Divinity	-	3,517	66	3,583	33.0%
Education	75	9,523	3,066	12,664	54.1%
Government	-	8,004	8,381	16,385	44.6%
Law	3,836	30,138	18,660	52,634	77.0%
Medical	3,145	10,864	362	14,372	49.8%
Public Health	-	5,657	1,771	7,428	38.1%
Extension	-	2,189	569	2,758	79.7%
TOTAL	\$11,923	\$114,081	\$75,617	\$201,621	36.7%

Loans

Institutional loans are made to students from University capital without Federal guarantee.

Federal loan programs may involve capital from Harvard, or other private or Federal sources, loaned under Federal sponsorship such as Perkins, Direct Loans and FFEL programs.

Outside loans include private capital loaned to students or parents. It excludes personal loans.

EMPLOYMENT

	Other		Total	% of Total Aid for School	TOTAL Grant, Loans & Employment
	Work-Study (CWSP)	Term			
College	\$920	\$4,432	\$5,352	4.3%	\$125,864
GSAS	455	33,872	34,326	24.7%	138,757
Business	-	-	-	0.0%	71,835
Dental	17	-	17	0.2%	8,016
Design	325	102	427	3.1%	13,843
Divinity	650	-	650	6.0%	10,871
Education	598	-	598	2.6%	23,403
Government	205	640	845	2.3%	36,753
Law	723	661	1,384	2.0%	68,337
Medical	41	-	41	0.1%	28,873
Public Health	58	-	58	0.3%	19,483
Extension	-	-	-	0.0%	3,460
TOTAL	\$3,991	\$39,706	\$43,698	8.0%	\$549,495

Employment

Work-Study is a Federally-sponsored partnership with colleges and universities to provide students with the opportunity to work while in school.

Other term earnings reflect on-campus earnings by students who are not part of the work-study program. Jobs include casual employment (to the extent known), teaching fellowships, research assistantships and resident tutors.

(1) Amounts do not include the Business School, Law School, Medical School or the School of Government funding for graduates in the Low Income Protection Plan/Loan Repayment Assistance Programs.

(2) College total for loans includes \$13,535,102 in PLUS Loans and other Parental Loans.

NOTE: As of FY2006, degree student financial assistance for the ART is excluded from the exhibit.

Therefore, ART financial assistance amounts must be removed when comparing totals to prior years.

SOURCE: INTERNAL SURVEY

Federal Sponsored Research: FY2005 - FY2006

Expressed in thousands of dollars



	FY2005			FY2006			Change in Total Exp. 2005/2006	FY2006 Indirect as % of Total
	Direct Costs	Indirect Costs	Total Costs	Direct Costs	Indirect Costs	Total Costs		
ACADEMIC DEPARTMENTS								
FAS								
Arts & Sciences	\$62,426	\$26,305	\$88,731	\$69,214	\$29,268	\$98,482	11.0%	29.7%
Division of Engineering and Applied Sciences	22,451	9,513	31,964	22,281	9,847	\$32,128	0.5%	30.6%
College Library	91	9	100	200	36	\$236	136.5%	15.3%
Museum of Comparative Zoology/Peabody Museum	3,005	1,063	4,068	2,449	921	\$3,370	(17.2%)	27.3%
College Life, Athletics, GSAS	-	-	-	-	-	-	-	-
FAS Subtotal	\$87,973	\$36,890	\$124,863	\$94,144	\$40,072	\$134,216	7.5%	29.9%
School of Business Administration	-	-	-	-	-	-	-	-
School of Dental Medicine	4,334	1,350	5,685	4,891	1,703	6,595	16.0%	25.8%
School of Design	64	21	85	61	14	75	(11.9%)	18.1%
Divinity School	-	-	-	27	0	27	N/A	0.0%
Graduate School of Education	5,515	1,059	6,574	4,781	988	5,770	(12.2%)	17.1%
JFK School of Government	8,490	1,957	10,446	9,598	2,159	11,757	12.5%	18.4%
Law School	344	51	394	198	35	234	(40.8%)	15.1%
Medical School	142,517	60,654	203,171	138,603	58,374	196,977	(3.0%)	29.6%
School of Public Health	113,821	41,109	154,929	120,629	35,962	156,591	1.1%	23.0%
Radcliffe Institute for Advanced Study	277	174	451	-	-	-	(100.0%)	-
Other Faculties Subtotal	\$275,361	\$106,375	\$381,736	\$278,788	\$99,235	\$378,026	(1.0%)	26.3%
Other Academic Departments⁽¹⁾	\$372	\$111	\$484	\$400	\$128	\$528	9.2%	24.2%
Service and Other Departments⁽²⁾	\$703	\$80	\$782	\$833	\$90	\$923	18.0%	9.8%
GRAND TOTAL⁽³⁾	\$364,409	\$143,456	\$507,865	\$374,166	\$139,526	\$513,692	1.1%	27.2%

(1) Includes Arnold Arboretum, Harvard University Art Museums, and Joint Center for Housing Studies.

(2) Includes Central Administration, University Library and University Health Services.

(3) Totals include both Federal and Federal Once-Removed (Federal Once-Removed total cost for FY2005 is \$57,574 and for FY2006 is \$60,414). Totals exclude financial aid and agency funds.

SOURCE: OFFICE FOR SPONSORED PROGRAMS - ANNUAL REPORT

Federal Research by Agency: FY2005 - FY2006



Expressed in thousands of dollars

	FY2005	FY2006	% Change	FY2006 Total as % of Federal Total
Department of Health & Human Services				
National Institutes of Health	\$354,996	\$362,878	2.2%	70.6%
Other DHHS	46,193	41,560	(10.0%)	8.1%
Subtotal	\$401,189	\$404,438	0.8%	78.7%
Department of Defense				
Defense Advanced Research Projects Agency ⁽¹⁾	2,885	6,210	115.3%	1.2%
Department of the Army	6,843	5,907	(13.7%)	1.1%
Department of the Navy	9,657	5,905	(38.9%)	1.1%
Department of the Air Force ⁽²⁾	2,525	5,037	99.5%	1.0%
Subtotal	\$21,910	\$23,059	5.2%	4.5%
National Science Foundation	38,157	38,162	0.0%	7.4%
Department of Energy	12,901	11,747	(8.9%)	2.3%
Nat'l. Aeronautics & Space Administration	8,367	9,324	11.4%	1.8%
Agency for International Development	5,578	7,598	36.2%	1.5%
Department of Education	6,890	6,242	(9.4%)	1.2%
Environmental Protection Agency	5,972	5,983	0.2%	1.2%
Department of State	1,610	1,796	11.6%	0.3%
Department of Commerce	1,674	1,164	(30.5%)	0.2%
Nat'l. Endowment for the Humanities	420	727	73.1%	0.1%
Department of Veterans Affairs	121	561	363.6%	0.1%
Department of Transportation	248	423	70.6%	0.1%
Federal Emergency Management Agency	283	414	46.3%	0.1%
Department of Interior	370	395	6.8%	0.1%
Department of Justice	375	334	(10.9%)	0.1%
Department of Housing and Urban Development	72	207	187.5%	0.0%
Department of Agriculture	541	166	(69.3%)	0.0%
Department of the Treasury	0	70	-	0.0%
National Endowment for the Arts	29	60	106.9%	0.0%
Department of Homeland Security	42	49	16.7%	0.0%
General Services Administration	45	28	(37.8%)	0.0%
Other Federal Agencies	1,071	745	(30.4%)	0.1%
GRAND TOTAL ⁽³⁾	\$507,865	\$513,692	1.1%	100.0%

(1) Includes Other - Department of Defense.

(2) Includes Air Force Office of Scientific Research

(3) Totals include both Federal and Federal Once-Removed (Federal Once-Removed total cost for FY2005 is \$57,574 and for FY2006 is \$60,414). Totals exclude financial aid and agency funds.

SOURCE: OFFICE FOR SPONSORED PROGRAMS - ANNUAL REPORT

Non-Federal Sponsored Research: FY2005 - FY2006



Expressed in thousands of dollars

ACADEMIC DEPARTMENTS	FY2005			FY2006			Change in Total Exp. 2005/2006	FY2006 Indirect as % of Total
	Direct Costs	Indirect Costs	Total Costs	Direct Costs	Indirect Costs	Total Costs		
FAS								
Arts & Sciences	\$15,879	\$1,178	\$17,057	\$16,676	\$1,431	\$18,107	6.2%	7.9%
Division of Engineering and Applied Sciences	1,312	539	1,850	2,644	277	2,922	57.9%	9.5%
College Library	-	-	-	-	-	-	-	-
Museum of Comparative Zoology/Peabody Museum	215	15	230	312	11	323	40.7%	3.4%
College Life, Athletics, GSAS	15	-	15	-	-	-	-	-
FAS Subtotal	\$17,420	\$1,732	\$19,151	\$19,632	\$1,719	\$21,352	11.5%	8.1%
School of Business Administration	140	-	140	-	-	-	(100.0%)	0.0%
School of Dental Medicine	435	52	486	286	65	351	(27.8%)	18.5%
School of Design	329	58	387	341	57	398	2.9%	14.3%
Divinity School	154	16	170	483	45	527	209.6%	8.5%
Graduate School of Education	6,618	463	7,081	5,966	559	6,525	(7.8%)	8.6%
JFK School of Government	12,890	1,625	14,515	12,536	1,817	14,354	(1.1%)	12.7%
Law School	3,679	242	3,921	3,589	175	3,764	(4.0%)	4.6%
Medical School	29,975	4,231	34,206	25,727	3,454	29,181	(14.7%)	11.8%
School of Public Health	29,073	3,624	32,697	27,637	3,283	30,920	(5.4%)	10.6%
Radcliffe Institute for Advanced Study	150	4	153	486	3	489	219.0%	0.6%
Other Faculties Subtotal	\$83,442	\$10,313	\$93,756	\$77,051	\$9,458	\$86,509	(7.7%)	10.9%
Other Academic Departments⁽¹⁾	\$1,402	\$98	\$1,501	\$1,233	\$85	\$1,318	(12.2%)	6.4%
Service and Other Departments⁽²⁾	\$1,059	\$7	\$1,067	\$1,086	\$1	\$1,087	1.9%	0.1%
GRAND TOTAL⁽³⁾	\$103,325	\$12,151	\$115,475	\$99,001	\$11,264	\$110,266	(4.5%)	10.2%

(1) Includes Arnold Arboretum, Harvard University Art Museums, Joint Center for Housing Studies, Nieman Foundation, and Villa I Tatti.

(2) Includes Central Administration, Memorial Church, President's Initiatives, University Library, University Health Services, and University Operations Services.

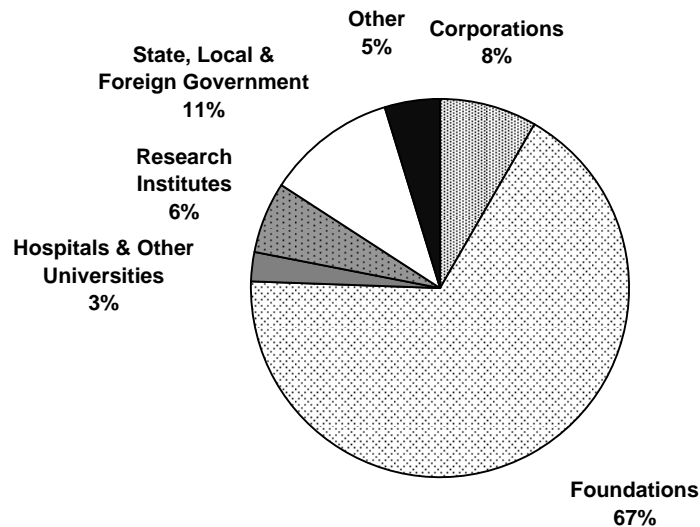
(3) Total excludes financial aid expenditures and agency funds.

SOURCE: OFFICE FOR SPONSORED PROGRAMS - ANNUAL REPORT

Expenditures under Non-Federal Sponsored Research by Sponsor Source: FY2006

Expressed in thousands of dollars

	Corporations	Foundations	Hospitals & Other Universities	Research Institutes	State, Local, & Foreign Government	Other Sources	Total
FAS							
Faculty of Arts & Sciences	\$1,119	\$14,300	\$124	\$1,433	\$560	\$571	\$18,107
Division of Engineering and Applied Sciences	684	1,911	146	16	-	165	2,922
College Library	-	-	-	-	-	-	-
Museum of Comparative Zoology/Peabody Museum	-	184	85	48	-	5	323
College Life, Athletics, GSAS	-	-	-	-	-	-	-
FAS Subtotal	\$1,803	\$16,395	\$355	\$1,497	\$560	\$741	\$21,352
School of Business Administration	-	-	-	-	-	-	-
School of Dental Medicine	236	55	27	-	33	-	351
School of Design	36	184	-	-	112	66	398
Divinity School	-	527	-	-	-	-	527
Graduate School of Education	15	5,668	-	2	278	562	6,525
JFK School of Government	1,205	7,804	84	1,218	2,714	1,330	14,354
Law School	-	3,501	143	81	40	-	3,764
Medical School	5,209	17,939	800	2,941	1,121	1,172	29,181
School of Public Health	644	19,776	1,460	1,034	7,282	724	30,920
Radcliffe Institute for Advanced Study	-	489	-	-	-	-	489
Other Faculties Subtotal	7,345	\$55,943	\$2,514	\$5,276	\$11,580	\$3,854	\$86,509
Other Academic Departments ⁽¹⁾	-	\$1,312	-	-	\$6	-	\$1,318
Service and Other Departments ⁽²⁾	-	\$479	-	-	\$8	\$600	\$1,087
GRAND TOTAL ⁽³⁾	\$9,148	\$74,129	\$2,869	\$6,773	\$12,154	\$5,195	\$110,266



(1) Includes Arnold Arboretum, Harvard University Art Museums, Joint Center for Housing Studies, Nieman Foundation, and Villa I Tatti.

(2) Includes Central Administration, Memorial Church, President's Initiatives, University Health Services, University Library and University Operations Services.

(3) Total excludes financial aid expenditures and agency funds.

Historical Funding of Research by Sponsor

Expressed in thousands of dollars

Federal (Prime and Once-Removed)

	Fiscal Year				
	2002	2003	2004	2005	2006
National Institutes of Health	\$283,112	\$297,035	\$343,248	\$354,996	\$362,878
Other DHHS	18,549	22,714	24,621	46,193	41,560
National Science Foundation	32,665	30,437	37,525	38,157	38,162
Department of Defense	16,569	19,060	18,222	21,911	23,059
Department of Energy	8,751	10,701	12,897	12,901	11,747
Nat'l. Aeronautics & Space Administration	9,803	9,402	10,429	8,367	9,324
Agency for International Development	4,286	4,153	3,684	5,578	7,598
Department of Education	6,634	6,096	5,393	6,890	6,242
Environmental Protection Agency	4,025	4,077	4,513	5,972	5,983
Department of Commerce	802	979	1,371	1,674	1,164
Department of State	1,581	1,705	1,797	1,610	1,796
Other ⁽¹⁾	7,358	6,305	4,613	3,617	4,178
Federal Total	\$394,135	\$412,664	\$468,312	\$507,865	\$513,692

Non-Federal

	2002	2003	2004	2005	2006
Foundations	\$89,503	\$89,251	\$86,359	\$78,119	\$74,129
State, Local & Foreign Government	9,840	10,629	10,439	12,797	12,154
Corporations	13,875	9,916	10,084	11,058	9,147
Research Institutes	3,751	5,347	5,415	4,677	6,773
Other Sources	8,828	8,886	7,429	6,763	5,195
Hospitals & Other Universities	2,172	2,254	2,555	2,061	2,868
Non-Federal Total	\$127,971	\$126,283	\$122,281	\$115,475	\$110,266
GRAND TOTAL ⁽²⁾	\$522,105	\$538,947	\$590,593	\$623,340	\$623,958

Growth in Sponsored Projects

Expressed in millions of dollars

Fiscal Year	Expenditure Actual \$	% Change	Expressed as	
			FY06 \$	% Change in FY06 \$
2002	\$522.1	7.2%	\$583.1	5.3%
2003	538.9	3.2%	588.9	1.0%
2004	590.6	9.6%	631.6	7.2%
2005	623.3	5.5%	647.1	2.5%
2006	\$624.0	0.1%	\$624.0	(3.6%)

(1) Agencies listed on this exhibit are based on FY2006 expenditures. Information on agencies in prior years can be obtained from the Office for Sponsored Programs.

(2) Total excludes financial aid expenditures and agency funds.

SOURCE: OFFICE FOR SPONSORED PROGRAMS - ANNUAL REPORT

The Harvard University Library System

The Harvard University Library, founded in 1638, is the largest academic library in the world. Harvard's extensive collections serve as invaluable resources for students, faculty, and researchers. Holdings include over 15.8 million volumes, approximately 7.5 million photographs, and millions of manuscript pages, as well as recordings, maps, ephemera, and an exploding number of digital resources, all under the management of the 1,200 full-time-equivalent staff members in more than 80 individual libraries. Most libraries require a Harvard ID for admittance.

To locate books or other library materials, to find information on specific Harvard libraries, or to access the library catalogs, visit the Harvard Libraries web site at <http://lib.harvard.edu>.

Digital Collections at Harvard

Harvard University provides open, online access to a rich array of digital materials, including photographic collections, documents, musical scores, prints, drawings, historical maps, books, legal transcripts, diaries, manuscripts, and more. You can also find a growing number of subject-specific collections available online at <http://digitalcollections.harvard.edu>

Locating Digital Materials at Harvard

Visitors can use thousands of digital materials from the Harvard collections. While access to many licensed e-resources, such as journals, requires a Harvard ID and PIN, many other digital materials are open to all Internet users. Here are some places to start

- **E-Research @ Harvard Libraries** is the University's online system for searching and finding e-resources of many kinds. <http://e-research.lib.harvard.edu>
- Use the **HOLLIS catalog** to locate not only digital collections, but some individual digital objects as well. Look for "Internet Links" in HOLLIS records or choose "Digital Resources" when you begin your HOLLIS search. <http://holliscatalog.harvard.edu>
- **VIA**, Harvard's Visual Information Access catalog, provides links to more than 270,000 individual images. <http://via.harvard.edu>

The Harvard University Library System

The many libraries at Harvard University comprise the largest academic library in the world, which is known broadly as the Harvard University Library. The Harvard University Library (HUL) is also a specific unit of Harvard's Central Administration. <http://hul.harvard.edu>

HUL's mission is to collaborate with and coordinate the many independent parts of the Harvard library system to provide users with the best possible collections in all media, to make them as accessible as possible, and to preserve them for the future. HUL programs include:

- The **Harvard Depository** (HD), a high-density, offsite storage facility shared by the Harvard libraries. Research libraries and consortia worldwide have emulated its innovative design. <http://hul.harvard.edu/hd>
- The **Harvard-Google Project**, through which the University Library and Google are collaborating to bring a large number of Harvard's out-of-copyright library books to Internet users everywhere. <http://hul.harvard.edu/hgproject>
- The **Harvard University Archives** preserves and provides access to Harvard's historical records; gathers an accurate, authentic, and complete record of the life of the University; and promotes the highest standards of management for Harvard's current records. The collections are used by scholars of American social, intellectual, and academic history; by historians of Harvard, including University departments studying their own history; by students learning the methods of historical research; and by the general public. <http://hul.harvard.edu/huarc>
- HUL's **Office for Information Systems** (OIS) develops, implements, and maintains innovative and stable systems and services that support the academic and research mission of the University by providing integrated and coherent access to research materials and resources. <http://hul.harvard.edu/ois>
- Harvard's **Open Collections Program** (OCP) advances teaching and learning on historical topics by providing online access to selected, subject-specific historical resources. <http://ocp.hul.harvard.edu>
- The **Weissman Preservation Center** specializes in the conservation of the rarest of books, manuscripts, art on paper, photographs, and other flat objects, which are among the University's special collections. <http://preserve.harvard.edu>

Summary of University Library Growth and Expenditures FY2006

	Collections Increase			Expenditures (in \$000's) ⁽²⁾					
			Volumes & Pamphlets	Salaries & Wages	Cost of Retirement and Health Programs	Books and Other Library Materials	Binding	Other Library Costs	Total
	Gross	⁽¹⁾ Net							
University Library (HUL) ⁽³⁾	2,121	2,121	119,596	\$6,724	\$2,290	\$11	-	\$8,151	\$17,175
Faculty of Arts & Sciences									
Central Collections	218,444	204,835	9,802,557	29,689	10,406	14,752	555	21,129	76,530
House Libraries	60	60	210,392	65	-	8	-	2	75
Departmental & Divisional Libraries	4,204	3,510	353,694	820	250	2,238	21	103	3,432
Special & Research Libraries	15,373	4,748	1,127,782	3,120	1,003	1,645	49	1,412	7,229
Graduate/Profess. School Libraries	52,456	25,062	4,212,549	17,629	6,078	9,486	392	8,763	42,348
Less Duplication	-	-	-					(6,984)	(6,984)
University Library Totals	292,658	240,336	15,826,570	\$58,047	\$20,026	\$28,139	\$1,017	\$32,576	\$139,806

(1) Net increase refers to the increase in volumes after accounting for replacement of previously owned volumes. Revised count of FY05 is 15,586,234.

(2) Due to rounding, expenditures may be slightly different than reported in the Library Annual Report.

(3) Expenditures for Harvard Depository reflect operations but exclude the interest and amortization for the Depository of \$1,925,949.

Library Collections: FY2006


	Increase FY2006		Volumes & Pamphlets FY2006 ⁽¹⁾
	Gross	Net	
University Library			
University Archives	2,032	2,032	118,900
Weissman Preservation Center	89	89	696
Library of the Faculty of Arts and Sciences (Harvard College Library)			
Central Collections			
Cabot	3,113	2,052	274,545
Fine Arts	7,344	7,270	337,328
Fung Library	3,047	3,002	59,387
Harvard–Yenching	26,331	26,331	1,153,295
Houghton	5,926	5,926	487,325
Lamont	3,468	2,449	183,469
Littauer	5,375	(3,595)	433,416
Loeb Music	5,219	5,219	260,952
Quad Library	508	482	25,628
Social Sciences Program	5,354	5,239	56,048
Tozzer (Peabody Museum)	4,863	2,718	250,937
Widener	147,896	147,742	6,280,227
House Libraries ⁽²⁾	60	60	210,392
Department and Divisional Libraries ⁽³⁾	4,204	3,510	353,694
Special Libraries			
Astrophysics: Wolbach Library	1,087	(1,847)	75,243
Biblioteca Berenson	3,156	3,156	147,049
Botany Libraries	2,530	2,447	291,322
Career Reference	193	30	5,134
Comparative Zoology, Ernst Mayr Library of Development Office Library	2,130	2,130	297,528
Dumbarton Oaks Research Library	5,090	4,660	207,188
European Studies, Center for, Library	113	113	13,598
Extension, Grossman Library for University	97	82	5,331
Forestry: Harvard Forest Library (Petersham, NH)	-	(7,000)	13,000
Hellenic Studies, Center for, Library	728	728	56,755
Islam: Hamilton A. R. Gibb Islamic Seminar Library	109	109	7,656
Journalism: Nieman Foundation	59	59	3,356
Oral Literature, Milman Parry Collection of	-	-	-
Property Planning, Harvard University, Information Research Center Library	8	8	1,213
Ukrainian Research Institute: Reference	73	73	3,409
Graduate and Professional School Libraries			
Harvard Business School: Baker Library	4,457	4,034	641,576
Harvard Design School: Frances Loeb Library	3,635	3,208	291,120
Harvard Divinity School: Andover–Harvard Theological Library	5,276	4,861	485,046
Harvard Graduate School of Education: Monroe C. Gutman Library	2,927	2,555	206,541
Harvard Law School Library	23,943	20,432	1,744,077
John F. Kennedy School of Government Library	2,646	(735)	58,578
Belfer Center for Science and International Affairs	-	-	4,374
Radcliffe Institute for Advanced Study: Schlesinger Library on History of American Women	3,842	3,836	85,037
Schools of Medicine, Public Health, and Dental Medicine: Francis A. Countway Library of Medicine	5,546	(13,044)	681,657
New England Primate Research Center	184	(85)	14,543
TOTAL UNIVERSITY COLLECTION	292,658	240,336	15,826,570

(1) Volumes and pamphlets for individual libraries include volumes transferred to the Depository. Totals reflect corrections in count.

(2) Includes Adams, Cabot, Currier, Dudley, Dunster, Eliot, Kirkland, Leverett, Lowell, Mather, Pforzheimer, Quincy, Winthrop.

(3) Includes African American Studies: Franklin and Wendy Raines Library, Biochemical Sciences Tutorial Library, Biological Laboratories Library, Fred N. Robinson Celtic Seminar Library, Chemistry and Chemical Biology Library, Herbert Weir Smyth Classical Library, Engineering and Applied Sciences: Gordon McKay, English: Child Memorial Library, History Departmental Library, History of Science Library, Linguistics Library, Mathematics: George David Birkhoff Library, Medieval Studies Library, Near Eastern Languages and Civilizations Library, Paleogeography, Philosophy: Robbins Library, Physics Research Library, Psychology Research Library, Sanskrit Library, Social Relations/Sociology Library, Statistics Library.

Physical Plant: FY2006

The University owns and operates more than six hundred buildings of varying sizes and characteristics, spread over a wide geographic area. They encompass approximately 23.5 million gross square feet of space. The physical plant provides living space for students and faculty, research facilities to advance our base of knowledge, classroom and library spaces for the dissemination of knowledge, and space for administrative and support services.

Location ⁽¹⁾	Gross Square Footage of		Principal Activity on Site
	Acres	Buildings (in 000's)	
Cambridge, MA	225	13,698	Main Campus
Boston, MA	21	3,104	Medical & Dental Schools; School of Public Health
Boston (Allston)	354	4,700	Business School; University Publisher; Athletics, Other.
Boston (Jamaica Plain)	233	41	Arnold Arboretum
Watertown MA	29	1,160	Arsenal Buildings
Weston, MA	69	11	Case Estates (Arnold Arboretum)
Somerville, MA	2	16	Affiliated Housing
Medford, MA	1		
Bedford, MA	79	11	Concord Field Station
Carlisle, MA	69		Concord Field Station
Concord, MA	605		Field Station (Museum of Comparative Zoology)
Marlborough, MA	43		Animal Research Center (NERPC)
Southborough, MA	87	293	Harvard Depository
Petersham, MA	2704	71	Harvard Forest (Forestry, Botany)
Hamilton, MA	99		Harvard Forest
Phillipston, MA	205		Harvard Forest
Royalston, MA	57		Harvard Forest
Harvard, MA	37	19	Agassiz Cottage (Observatory)
Shrewsbury, MA	6	16	Artemas Ward Homestead (Museum)
Kittery Point & Sutton Island, ME	n/a	12	Howells Memorial & Kendall Houses
Ledyard, CT	n/a	21	Red Top Crew Quarters
Washington, DC	16	198	Dumbarton Oaks & Center for Hellenic Studies
Florence, Italy	n/a	94	Villa I Tatti (Center for Italian Renaissance Studies)
TOTAL	4,941	23,467	

(1) In addition to locations listed above, Harvard has numerous smaller holdings.

SOURCES: HARVARD REAL ESTATE SERVICES

Physical Plant: FY2006



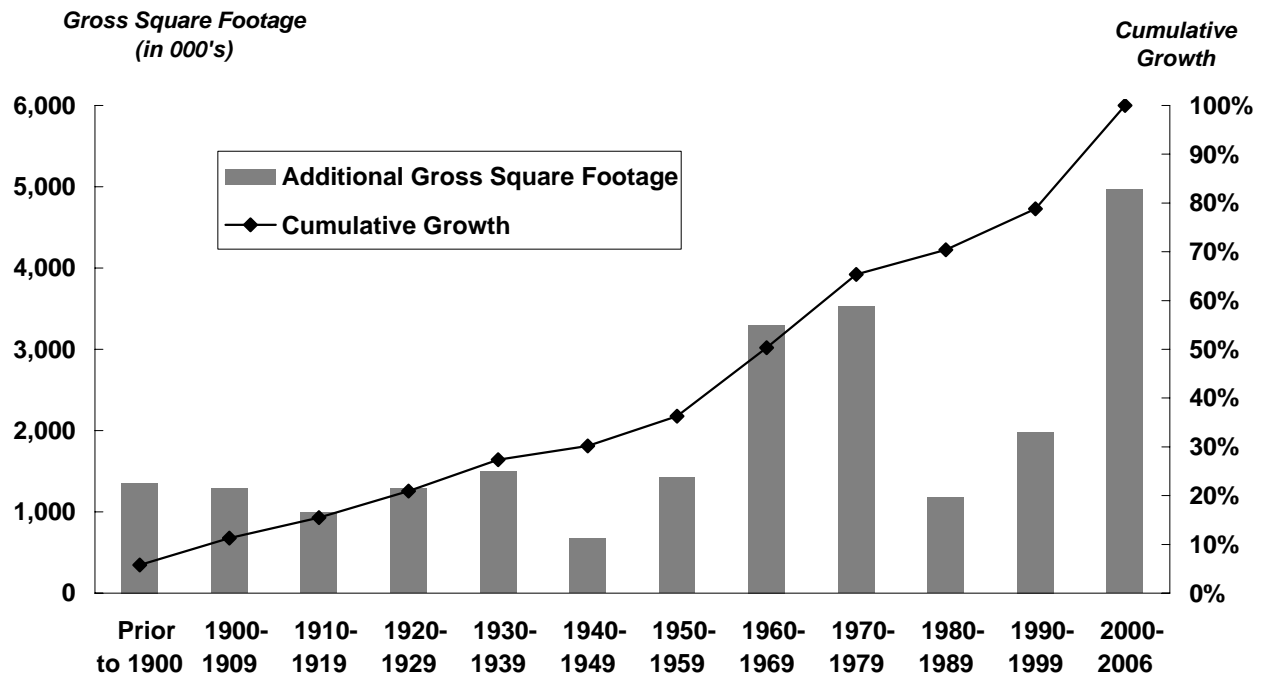
Building Ownership

	Number of Buildings	Gross Square Footage	
		of Buildings (in 000's)	As a % of Total
FAS	264	8,877	37.8%
Radcliffe	16	282	1.2%
Business	33	1,470	6.3%
Dental	2	99	0.4%
Design	2	179	0.8%
Divinity	7	180	0.8%
Education	6	215	0.9%
Government	4	264	1.1%
Law	19	920	3.9%
Medical	29	2,466	10.5%
Public Health	8	573	2.4%
Real Estate	172	6,301	26.9%
Central Administration	54	1,640	7.0%
TOTAL	616	23,467	100.0%

Primary Uses

	Gross Square Footage	
	of Buildings (in 000's)	As a % of Total
Residential/Dormitory	6,699	28.5%
Office/Classroom	4,934	21.0%
Lab/Studio	4,573	19.5%
Library	1,620	6.9%
Assembly/Museum	1,116	4.8%
Support	2,161	9.2%
Commercial	1,390	5.9%
Athletic	895	3.8%
Health Care	79	0.3%
TOTAL	23,467	100.0%

Additions to the Physical Plant



SOURCE: HARVARD REAL ESTATE SERVICES



